

Consent form

For people aged over 16



**Easy
Read**

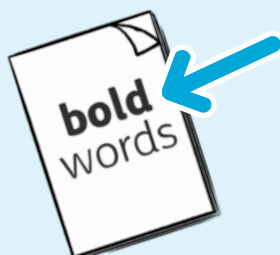
Easy Read



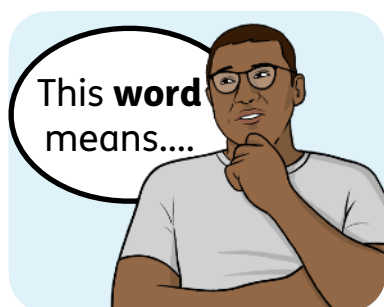
This is an Easy Read version of some information. It may not include all of the information but it will tell you about the important parts.



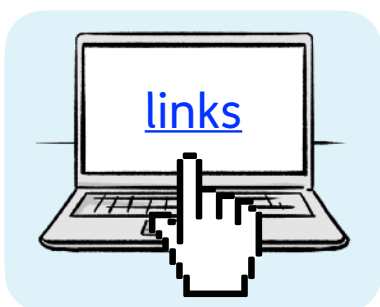
This Easy Read booklet uses easier words and pictures. Some people may still want help to read it.



Some words are in **bold** - this means the writing is thicker and darker. These are important words in the booklet.



Sometimes if a bold word is hard to understand, we will explain what it means.



[Blue and underlined](#) words show links to websites and email addresses. You can click on these links on a computer.

What is in this form

About this form.....	4
Who we share information with.....	5
Changing your mind	8
Understanding how people agree to being on the DSR.....	10



You can fill in a quick survey to say what you think about this Easy Read booklet:
www.easy-read-online.co.uk/easy-read-feedback-survey

About this form



This form is from NHS South East London.

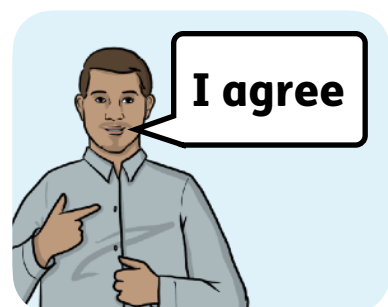


It is about the **Dynamic Support Register (DSR)**.



The **Dynamic Support Register** is a list of people:

- With a learning disability, and/or
- Who are autistic.



This form is to say you agree to being on the DSR.

Who we share information with

We may need to share your information with other organisations that help support you, like:



- Your local council, or other councils if you live away from your home borough.



- SELECT Keyworking Service (NHS South East London).



- Positive Support Group.



- South London and Maudsley NHS Trust.

Other organisations we may share your information with are:



- Oxleas NHS Foundation Trust.



- NHS England (if you are in hospital).



- South West London and St George's Mental Health NHS Trust



- CAMHS services outside South East London, if you use these.



- Other NHS hospitals and NHS health services in local areas.

Please tick 1 box:

☐

Yes, I agree to being added to the Dynamic Support Register.

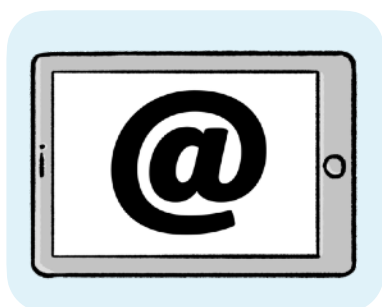
☐

No, I do not agree to being added to the Dynamic Support Register.

Your name:

Your signature:

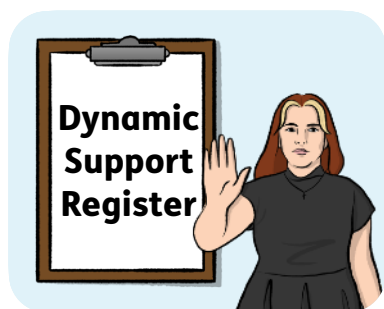
Today's date:



Please email this form to:

SELDSRAdmin@selondonics.nhs.uk

Changing your mind

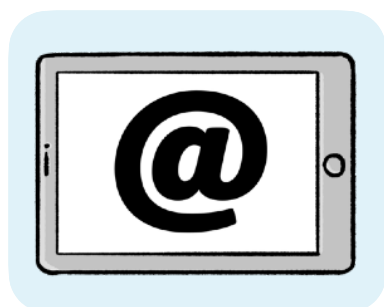


If you decide you do not want to be on the DSR, that is okay.



We will help you stop being on the DSR and answer any questions you have.

You can contact us to do this by:



- Emailing us at:
SELDSRAdmin@selondonics.nhs.uk



- Phoning us on: 020 8176 5565.



- Speaking to your health or care worker.

Keeping people safe



If we think you or someone else is in danger, we may add your name to the DSR to help keep you safe.



We may do this without you agreeing to it.

Understanding how people agree to being on the DSR



Before adding someone to the DSR, we need to check if they understand and agree.



We start by thinking that the person can decide for themselves.



We try everything we can to help them understand.



Even if someone makes a choice that seems unusual, it does not mean they cannot decide for themselves.

If it seems that the person might not understand:



- The person asking if they want to be on the DSR will do a check to see if they can understand, called a **capacity check**.



- If the person cannot decide, the person asking them must make a **Best Interest decision**.

A **Best Interest decision** means talking to the person, their family and supporters to decide what is best for them.



The person asking must write down the capacity check and the Best Interest decision on an official form or headed paper from their organisation.

They should send them to:
SELDSRAdmin@selondonics.nhs.uk