

Developing our System Integrator

Neighbourhood Based Care Board

10 December 2025

The Integrator

- The Bromley Integrator is the provider collaborative formed from the One Bromley Partnership, with King's College Hospital NHS Foundation Trust as Host.

Maturity matrix focus

- Developing core governance of the integrator function and leading delivery.
- Developing our Core INTs.
- Using data to drive commissioning and service design, based on understanding need and unwarranted variation
- Using enablers to realise plans in each INT.

Areas of investment

- Beyond pathway specific investment, we are utilising £250k on core INT development and delivery: £200k on project delivery support crossing Place and INTs, and £50k on organisational development programme.

Support across SEL

- Clarifying responsibility between ICB and Integrator on enabler functions.
- Driving pace on ICB-led enabler functions.
- Sharing learning on approaches to streamlining management of these matrix programmes.

Local Leadership: Bromley's integrator - One Bromley Partnership, hosted by King's College Hospital NHS FT - provides infrastructure for INT development.

Functions as the core infrastructure provider for integrated neighbourhood working drawing on all resources within the Partnership

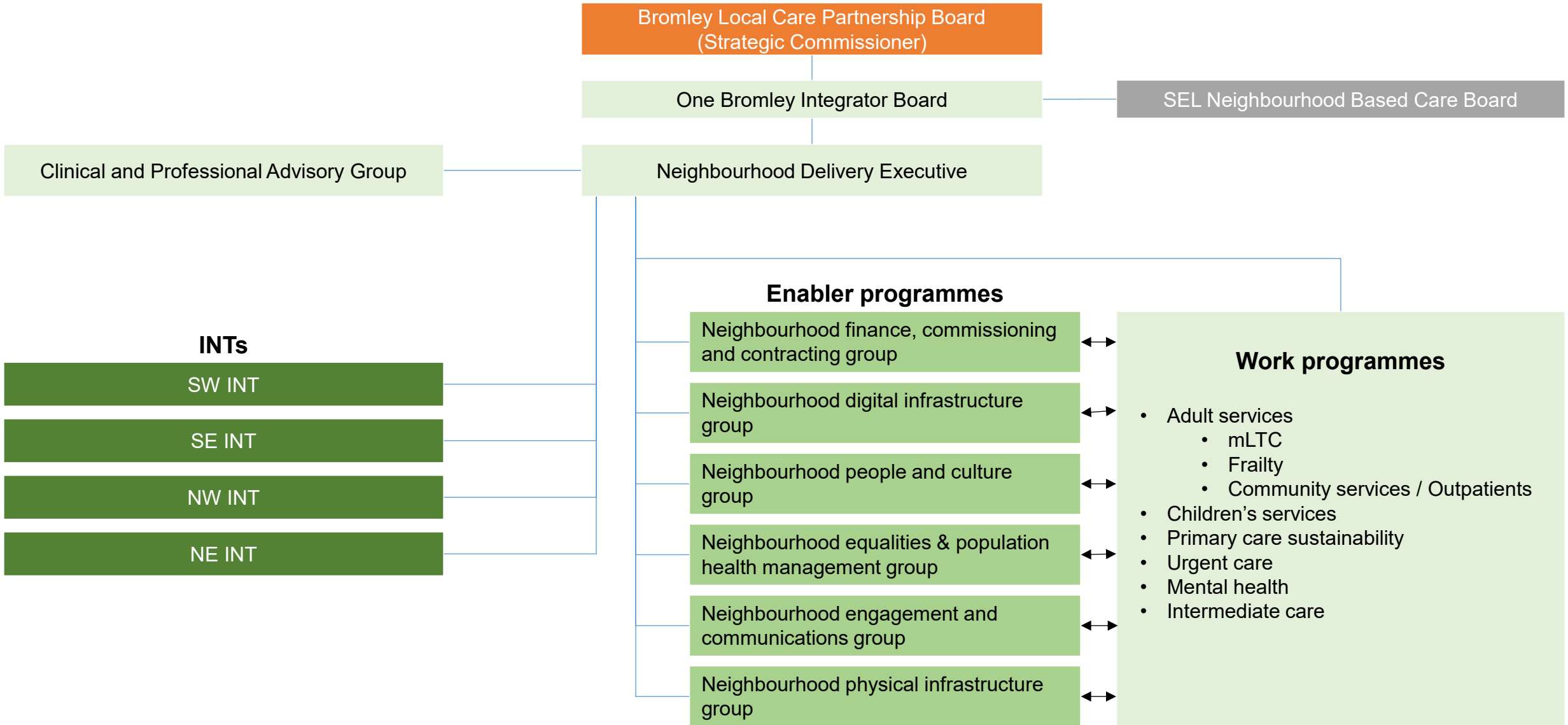
Key Responsibilities:

- **Enable Integration:** Brings together primary care, community services, mental health, local authority, and VCSE partners.
- **Operational Delivery:** Supports the development and functioning of INTs across Bromley.
- **Governance & Accountability:** Reports to the Bromley Place Partnership and co-leads local governance forums.
- **Resource Coordination:** Facilitates the shift of resources from acute to community settings.
- **Workforce & Infrastructure:** Mobilises teams, supports digital and estates planning, and ensures workforce readiness.
- **Population Health Management:** Uses data to target interventions and reduce inequalities.

Integrator Host - Kings

The **Integrator Host** is the organisation formally responsible for **hosting the integration functions** and providing the **infrastructure, governance, and operational support** needed for INTs to function effectively.

Role	Integrator	Integrator Host
Primary Function	Coordinates and drives integration across services and sectors.	Provides organisational infrastructure and support for the Integrator role.
Focus	Operational leadership, relationship-building, and system navigation.	Governance, HR, finance, and line management responsibilities.
Accountability	Accountable for delivery of integrated working and outcomes.	Accountable for hosting the role within a legal entity
Day-to-Day Role	Facilitates MDTs, aligns partners, supports care coordination.	Ensures the Integrator has the tools, systems, and support to operate effectively.
Example	A person working across GP practices, social care, and VCSE to align care.	The NHS Trust employing and supporting the Integrator.



Initial focus:

- **Developing core governance of the integrator function and leading delivery** (Functional and Relational)
 - Memoranda of Understanding between partners
 - Liaison at Place between Integrator and Strategic Commissioning – exploring areas of shared function
- **Developing our Core INTs**
 - Core INT has a named staff in each of our 4 geographies (Functional)
 - Core INT has agreed and operationalised ways of working in each of our 4 geographies - embedding holistic and personalised care in our INTs through staff trained to work in a neighbourhood approach, taking shared accountability with shared clinical risk (Functional and Relational)
- **Using data to drive commissioning and service design, based on understanding need and unwarranted variation**
 - Population health management: data sharing agreements in place for direct patient care and planning to underpin INT working and Integrator and strategic commissioner analysis and service planning, including understanding INT level intervention on unwarranted variation (Functional)
- **Using enablers to realise plans in each INT** (Functional and Relational)
 - Maximising use of estates, community relationships, digital and community assets and relationships in each INT
 - Programme and QI methodology to deliver initial core INT and continuously improve processes and pathways

Area of Spend	£'000s
<p>INT development leads for each INT – equivalent £50k per INT</p> <ul style="list-style-type: none"> • Includes funding for 0.5 WTE per INT • The development lead will be to provide programme and project support for each INT. This will include working across Place and INT partners to implement the core INT programmes (CYP, mLTC, Frailty) and further as developed. • They will act as the local bridge between partners, ensuring alignment of priorities and plans. Their effectiveness will be reviewed regularly through agreed KPIs. 	£200
<p>Organisational Development Programme</p> <ul style="list-style-type: none"> • Build the organisational capacity, leadership, culture, and infrastructure required to deliver integrated, person-centred care through INTs, with the Integrator acting as the enabler of neighbourhood-level transformation. 	£50
Total	£250