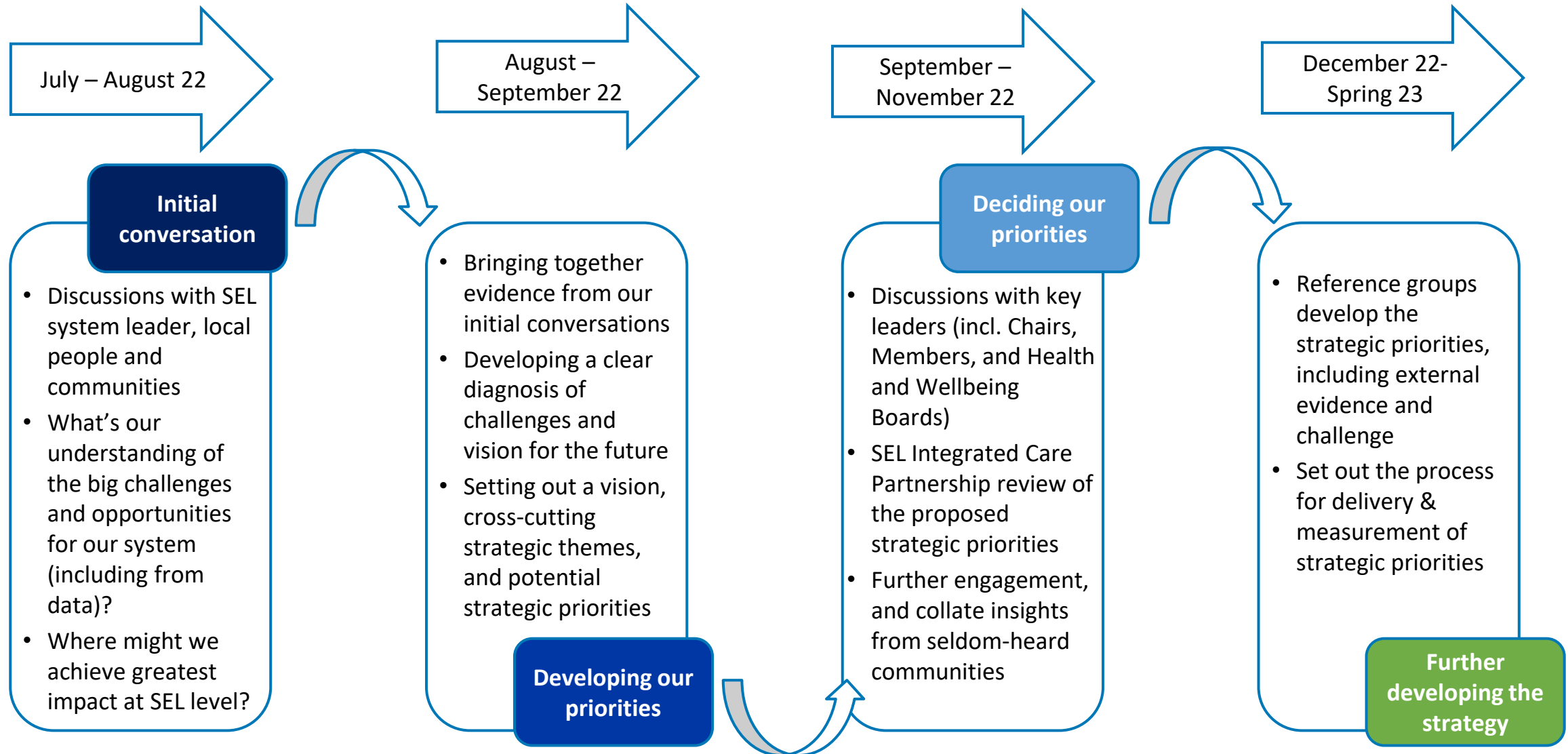


Engagement with local people and communities on the development of the Integrated Care Strategy

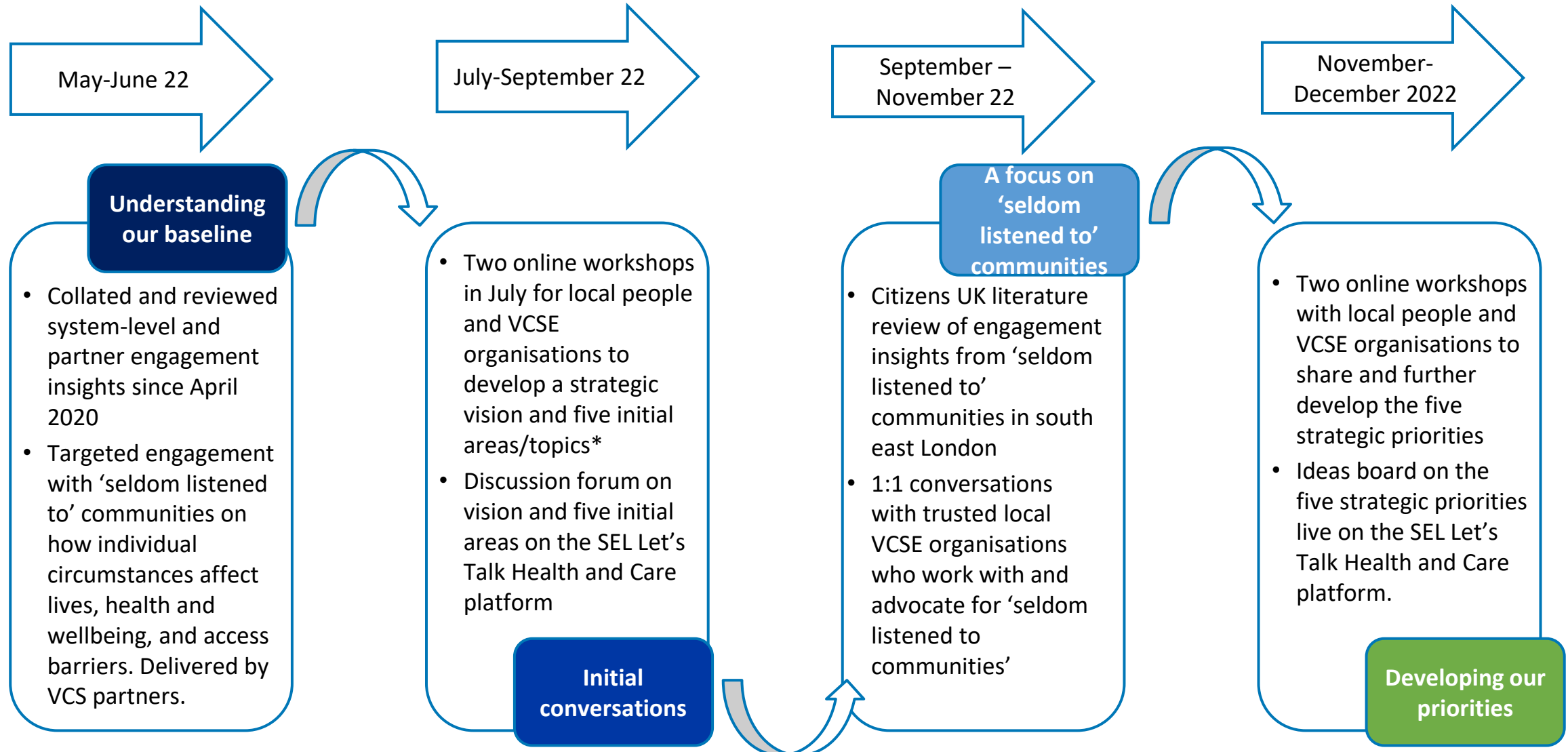
Engagement Assurance Committee

24 January 2023

Our overarching approach to creating the IC Strategy



Our approach to developing our strategy with local people and communities



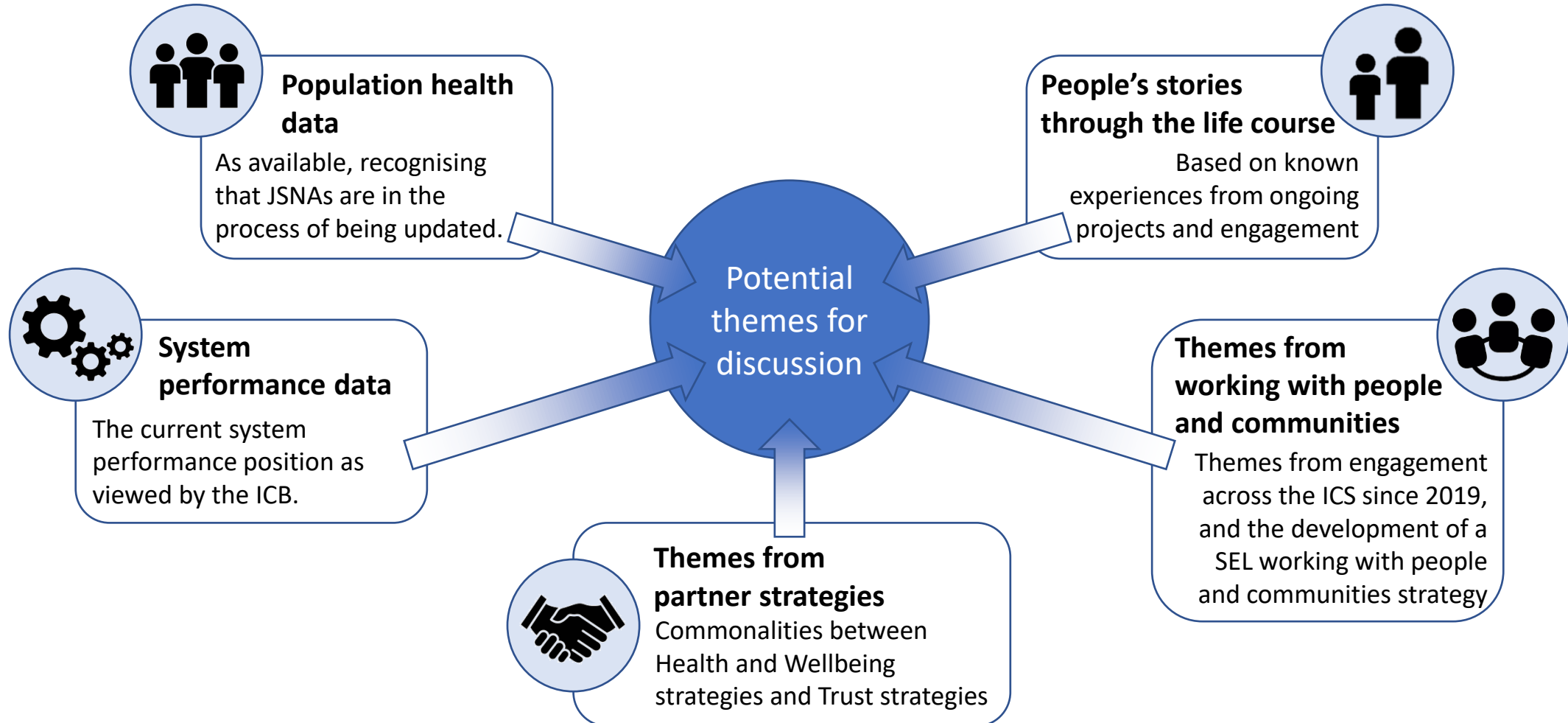
* Five areas informed by work in May-June 2022 and other insights

Our engagement approach








Engagement activity	Target Group	Timescales	Output informs
Face to face SEL wide engagement event	100 system leaders – SEL wide health and care leaders, VCSE leaders, Healthwatch	28 July 2022	Prioritisation process
Two online events for service users and partners	Open events for local people and VCSE sector	22 & 25 July 2022	Prioritisation process
Local Care Partnerships and Provider discussions	Leaders and staff in Local Care Partnerships and Providers	July – September 2022	Prioritisation process
Online engagement	Local people in SEL	July – August 2022	Prioritisation process
Lit review seldom listened to/under-served groups	Specific communities we need to engage more closely with	July – August 2022	Prioritisation process
Strategy development workshops (2x face to face & 2x online)	Leaders, experts, VCSE partners, Healthwatch, local people	Mid-end of November 2022	Strategy development process
Targeted engagement with seldom listened to groups	Specific communities we need to engage more closely with	November 2022	Strategy development process
Launch events (details to be determined)	All staff and public	June 2023	Awareness raising and mobilisation

Our starting point – where we are as a system

Five sources of information were initially collated and reviewed:



Our seven initial topics for engagement

1	Prevention & wellbeing		How can we become better at preventing ill-health and helping people to live healthy lives?
2	Children and Young People		How can we ensure that children and young people in South East London get the best possible start in life?
3	Access to good primary care		How can we ensure access to convenient, high quality primary care with our available staff and resources?
4	People with complex needs		How can we deliver well-coordinated, joined up and whole person care for people with long term conditions and complex health and social needs?
5	Adult mental health		How can we ensure earlier intervention and more appropriate and effective support for adults facing mental health challenges?
6	A sustainable system		What big things could we do across our system to make better use of our resources so we can meet demand and invest in better care?
7	Health Inequalities		What targeted action should we consider across our system to improve access, quality and outcomes of care for specific social groups?






N.B. These themes were our ‘starting point for discussion’ – not our proposed priorities for the strategy

What communities or groups have we identified as seldomly listened to/under-served in SEL?

These communities were initially identified through discussions with provider and LCP engagement leads, via the SEL Engagement Practitioners Network, as part of the SEL working with people and communities strategy work. This list was then further built on following discussions with Citizens UK and the online public engagement sessions held in July 2022.

- Those experiencing homelessness
- Asylum seekers, refugees
- Gypsy, Roma and Traveller communities
- LGBTQI+ communities
- Young people
- Those experiencing digital exclusion
- People working in the gig economy
- Carers
- People with learning disabilities
- Vietnamese community
- Latin American community
- Eastern European community
- Black, African, Caribbean communities
- Rastafari community
- Disability including deaf community, visual impairment
- People with addictions
- Sex workers
- Domestic violence

Our draft strategic priorities

Priority areas	Agreed priorities
<p>Prevention and wellbeing</p> 	<p>Ensuring that everyone in south east London receives convenient and effective care to prevent disease and for early detection of disease.</p>
<p>Children and young people</p> 	<p>Ensuring that mothers, children and families receive effective pre-natal, postnatal and early years support.</p>
<p>Children and young people</p> 	<p>Ensuring children and young people can access effective early intervention services for mental health challenges.</p>
<p>Adult mental health</p> 	<p>Ensuring that adults have rapid access to a broad range of effective early intervention services for mental health challenges.</p>
<p>Primary care, long term conditions, complex needs</p> 	<p>Ensuring that people can access high quality primary care, and people with long term conditions receive high quality, joined-up and convenient care spanning the primary, community and hospital system.</p>