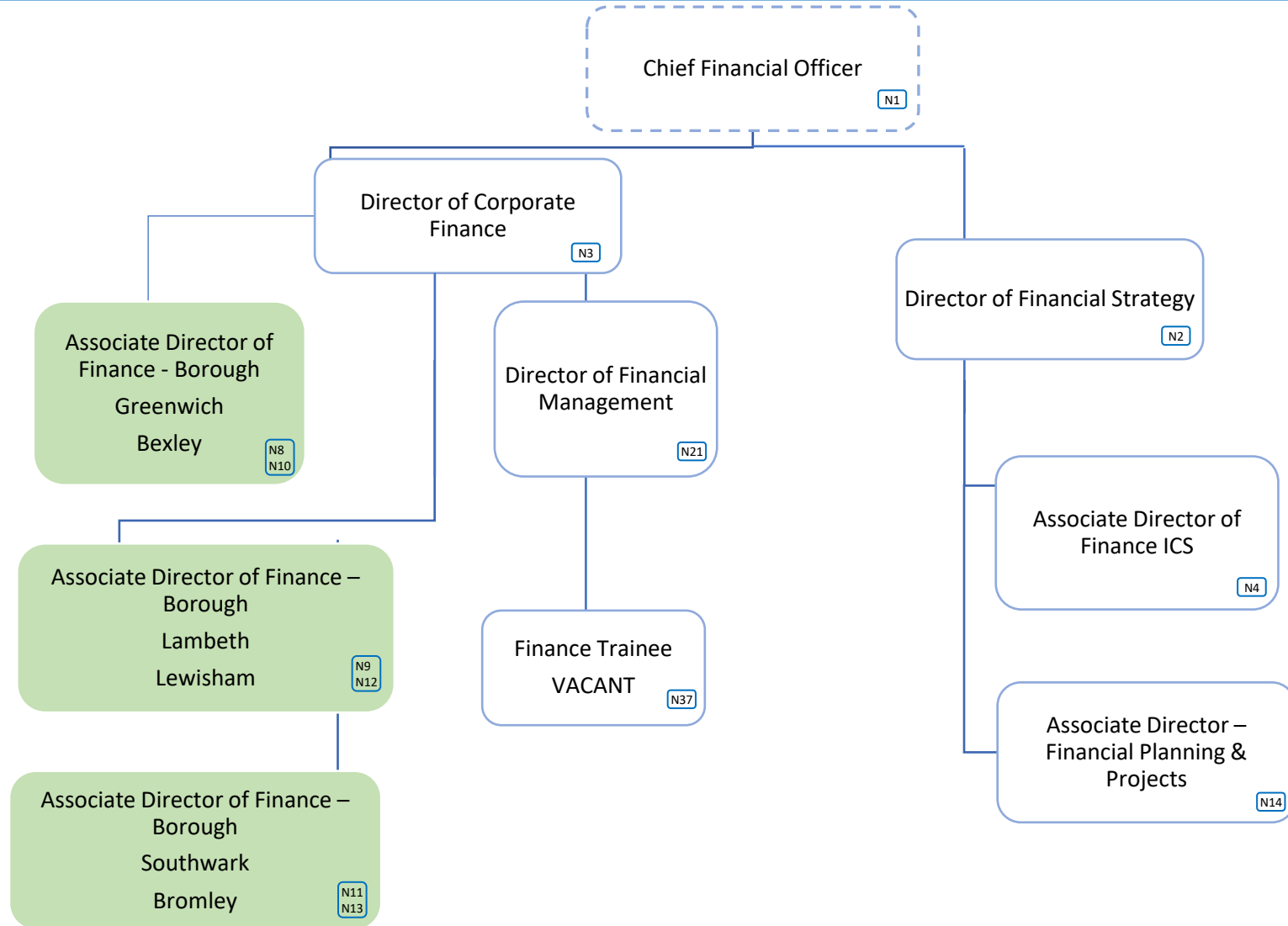


# **NHS South East London ICB structure**

**6 January 2023**

<b>Finance team total cost</b>	<b>£3,922,809</b>
<b>Finance team total cost excl vacancies</b>	<b>£3,345,429</b>

<b>Band</b>	<b>WTE</b>	<b>Headcount</b>
VSM	1.0	1.0
9	3.0	3.0
8D	4.0	3.0
8C	5.0	4.0
8B	8.0	8.0
8A	7.0	6.0
7	7.0	5.0
6	11.67	11.0
5	1.0	0
4	2.0	1.0
3	3.0	3.0
2	1.0	0



Included in borough structure costs

