

What is the Joint Forward Plan

Our Integrated Care Board Joint Forward Plan sets out our **medium term objectives and plans**, at both a borough level and from the perspective of our key care pathways and enablers, to ensure that we are developing a service offer to residents that:

- **Meets the needs of our population.**
- Demonstrates and makes tangible progress in **addressing the core purpose of our wider integrated care system - improving outcomes** in health and healthcare, **tackling inequalities** in outcomes, experience and access, **enhancing productivity and value for money** and helping the NHS support broader **social and economic development**.
- Delivers **national Long Term Plan and wider priorities**, all of which resonate from a SEL population health perspective.
- Meets the **statutory requirements** of our Integrated Care Board.

Our Joint Forward Plan provides the following:

- A strategic overview of our **key priorities and objectives for the medium term**.
- A high level summary of the **short term actions** that we will take, working with partners, to ensure the key milestones that support us in meeting these medium term objectives are secured, with further underpinning detail included in our 2023/24 and subsequent operational plans.

This is our first Joint Forward Plan and it will be **refreshed annually** to:

- Take account of implementation and outcomes over the previous year, including any learning to be applied to our future plans.
- Reflect any changes required due to new or emerging issues or requirements, be they related to population health, feedback from our communities and service users or service delivery issues and opportunities.

What is the Joint Forward Plan

The Joint Forward Plan builds on the work we have been doing as a wider system and is driven by:

- Our **Integrated Care Partnership integrated care strategy**. It includes clear commitments around our Integrated Care Board delivery of the strategic objectives, outcomes and priorities we have collectively agreed as a wider partnership to working collaboratively to secure.
- Our **borough based Local Health and Well Being Plans**, and the work our Local Care Partnerships will take forward to secure these plans, harnessing the benefits of joint working and integration to do so.
- A consideration of the full breadth of underpinning **care pathways and enablers** that we will need to develop, improve and transform to meet these priorities.
- A focus on **national priorities for the NHS**, including the planned **delegation** of key services to Integrated Care Boards from NHS England.

In taking our Joint Forward Plan forward we are committed to:

- **Improving population health and reducing inequalities.**
- Improving and **standardising our core service offer**, quality and outcomes across primary care, community, mental health and acute services, plus across our key care pathways such as urgent and emergency care.
- Taking **action to secure a sustainable health system**, with a particular focus on finance, workforce, quality and performance.
- Developing the supporting **system architecture and infrastructure** required to secure success and embed sustainable change.
- Pushing the boundaries with regards evidence based **innovation and transformation.**
- Doing so in **partnership with our communities, patients and service users** to ensure coproduced approaches and solutions that are patient and service user centred. Our integrated care strategy was developed with extensive engagement and the feedback received has been used to inform our Joint Forward Plan.

How does it all fit together

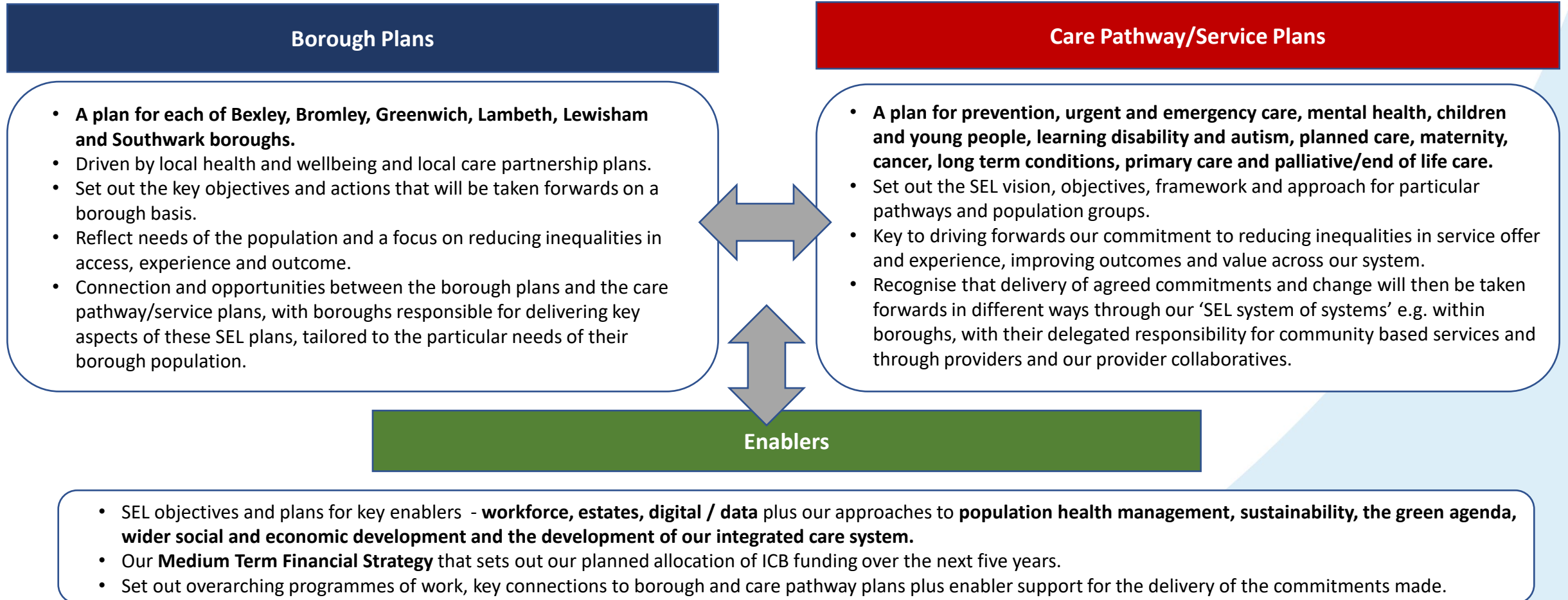
Overall context of the SEL System plans

The SEL Joint Forward Plan sits within a suite of strategic and operational documents and plans that have been and are being produced from January – June 2023. These represent a potentially confusing set of outputs but are interlinked with a clear golden thread across them.



How we have built our Joint Forward Plan

Our Joint Forward Plan has been developed bottom up – from our **Local Care Partnerships**, our **care pathway programme and transformation boards** and our **enabler programmes**, with work having taken place to ensure a read and link across these key building blocks.



Plus a cross check against the ICB's statutory functions and responsibilities