



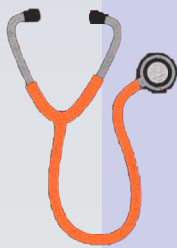
Learning disability and autism support in South East London



LDA Specialist Prescribing Advisors

Thomas Lee, Trang Dinh and **Ashika Patel**

Email us at Ldaprescribingteam@selondonics.nhs.uk



Primary care

- Improve accuracy of LD register
- Drive annual health checks
- Support with complex LDA patients

Practice, community and PCN pharmacists

- Medicine optimisation
- Polypharmacy
- Training and upskilling

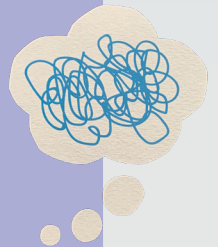


Care homes

- Medicine policy, storage, and record
- Medicine administration policy
- Covert administration process

STOMP

- Stopping over medication in people with LD and/or autism
- Advice on unnecessary psychotropics



Local multidisciplinary teams

- Community LD teams
- Mental health in LD teams
- STOMP working group



Transforming care

- Care and treatment review
- Medication review
- Transfer of care



**South London & Maudsley National Centre for Psychiatric
Medicines Information**

Pharmacy_Staff_Medicines_information@slam.nhs.uk

Oxleas Medicines Line oxl-tr.medicinesinfo@nhs.net