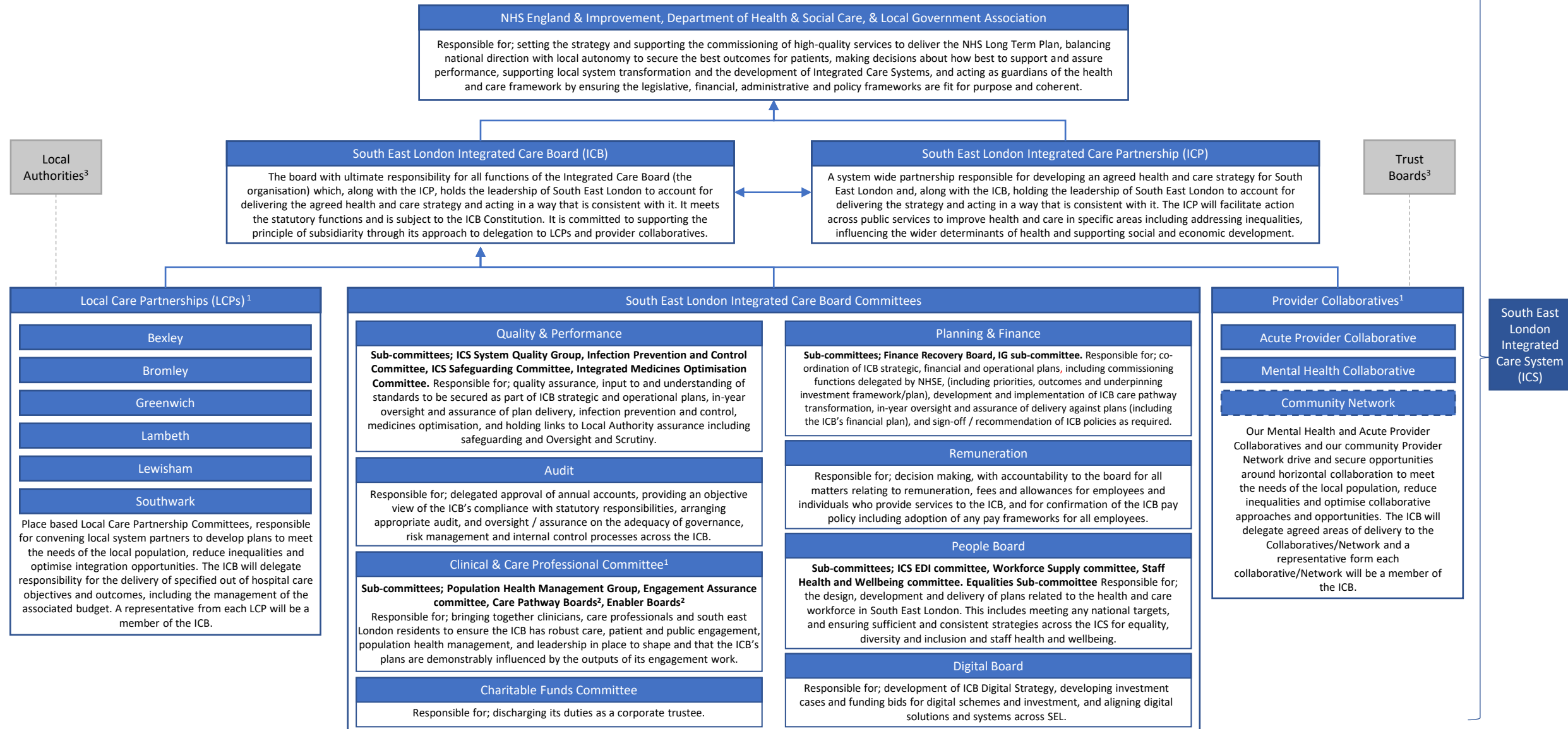


## South East London Integrated Care Board Functions and Decisions Map

The South East London Functions and Decisions Map sets out the governance arrangements that support collective accountability between partner organisations for whole-system delivery and performance. The purpose of this Functions and Decisions Map is to facilitate transparent decision-making and foster the culture and behaviours that enable system working. This document should be read in conjunction with the ICB Constitution, ICS Statutory Functions document and the Scheme of Reservations and Delegations document.



<sup>1</sup> Please note decisions related to quality and performance or planning and finance will go through these committees. Boards report direct for other areas of scope

<sup>2</sup> Care Pathway Boards and Enabler Boards will have dual reporting (to be confirmed) to the Clinical and Care Professional Committee and the Planning and Finance Committee

<sup>3</sup> These are shown due to the fact LCP and Provider Collaboratives are linked to these boards as well as the ICB