

# **NHS South East London ICB structure**

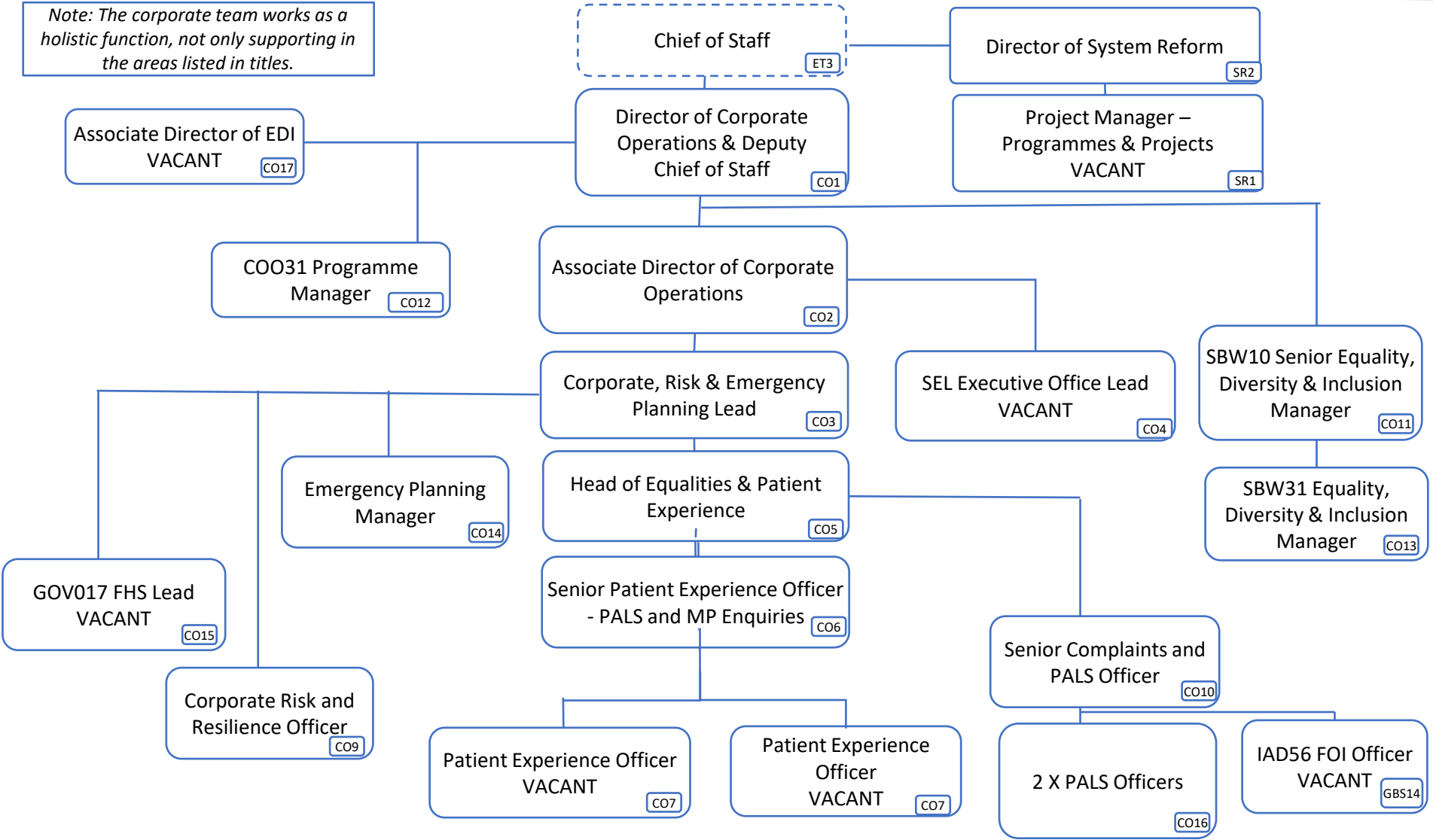
**6 January 2023**

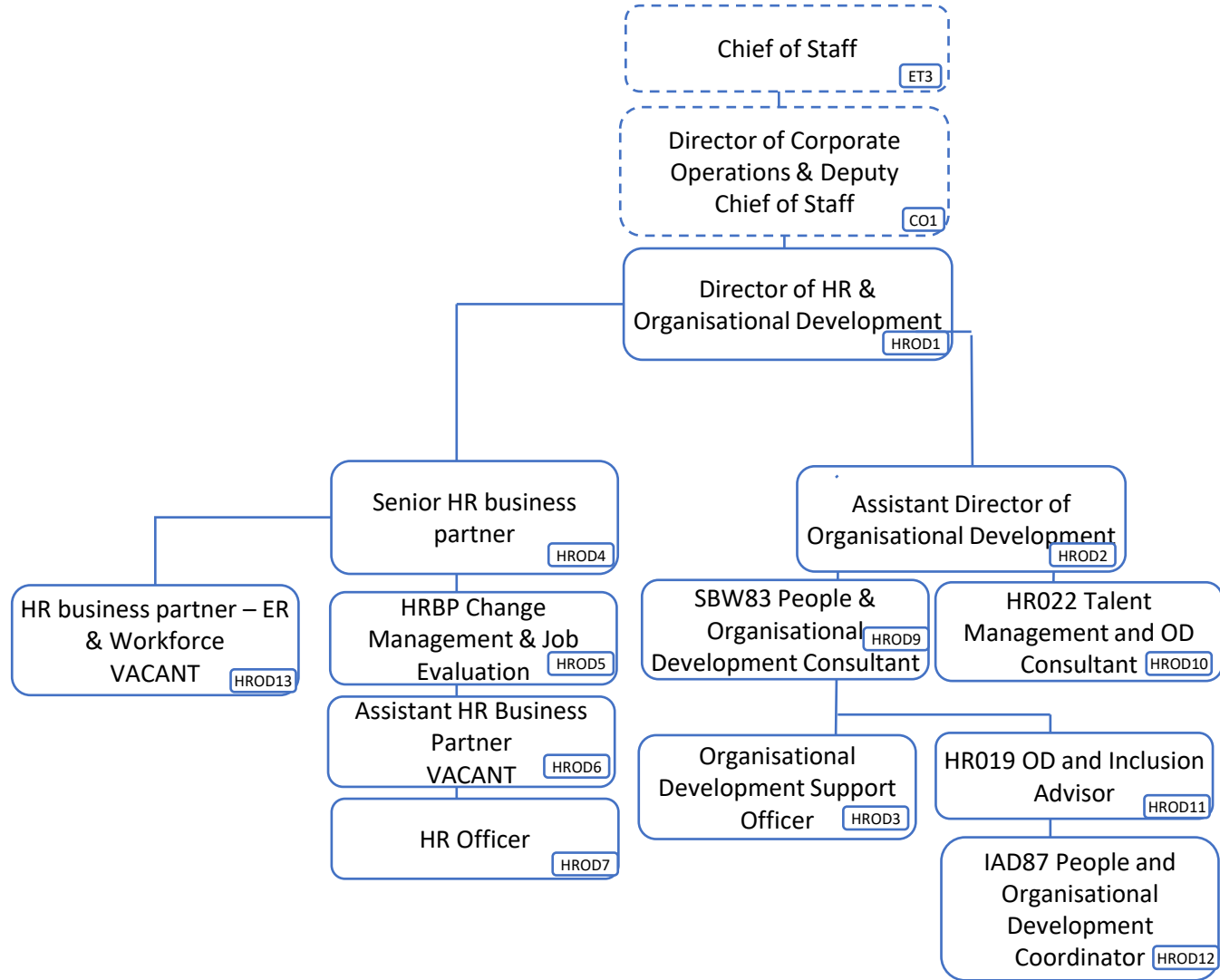
<b>Operations team total cost</b>	<b>£6,823,302</b>
<b>Operations team total cost excl vacancies</b>	<b>£5,492,263</b>

<b>Band</b>	<b>WTE</b>	<b>Headcount</b>
VSM	1.0	1.0
9	4.0	3.0
8D	6.0	5.0
8C	5.0	5.0
8B	15.0	13.0
8A	14.0	12.0
7	12.8	9.0
6	20.7	19.0
5	27.0	20.0
4	8.0	6.0
3	1.8	0

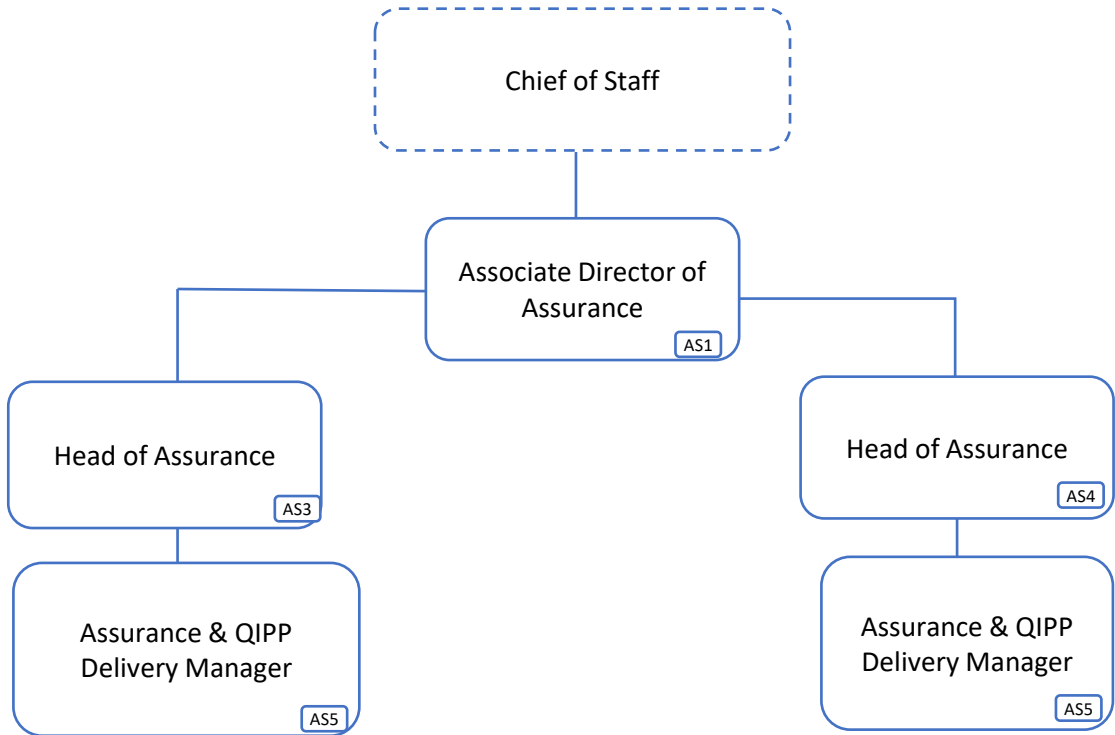
# Corporate Structure

*Note: The corporate team works as a holistic function, not only supporting in the areas listed in titles.*

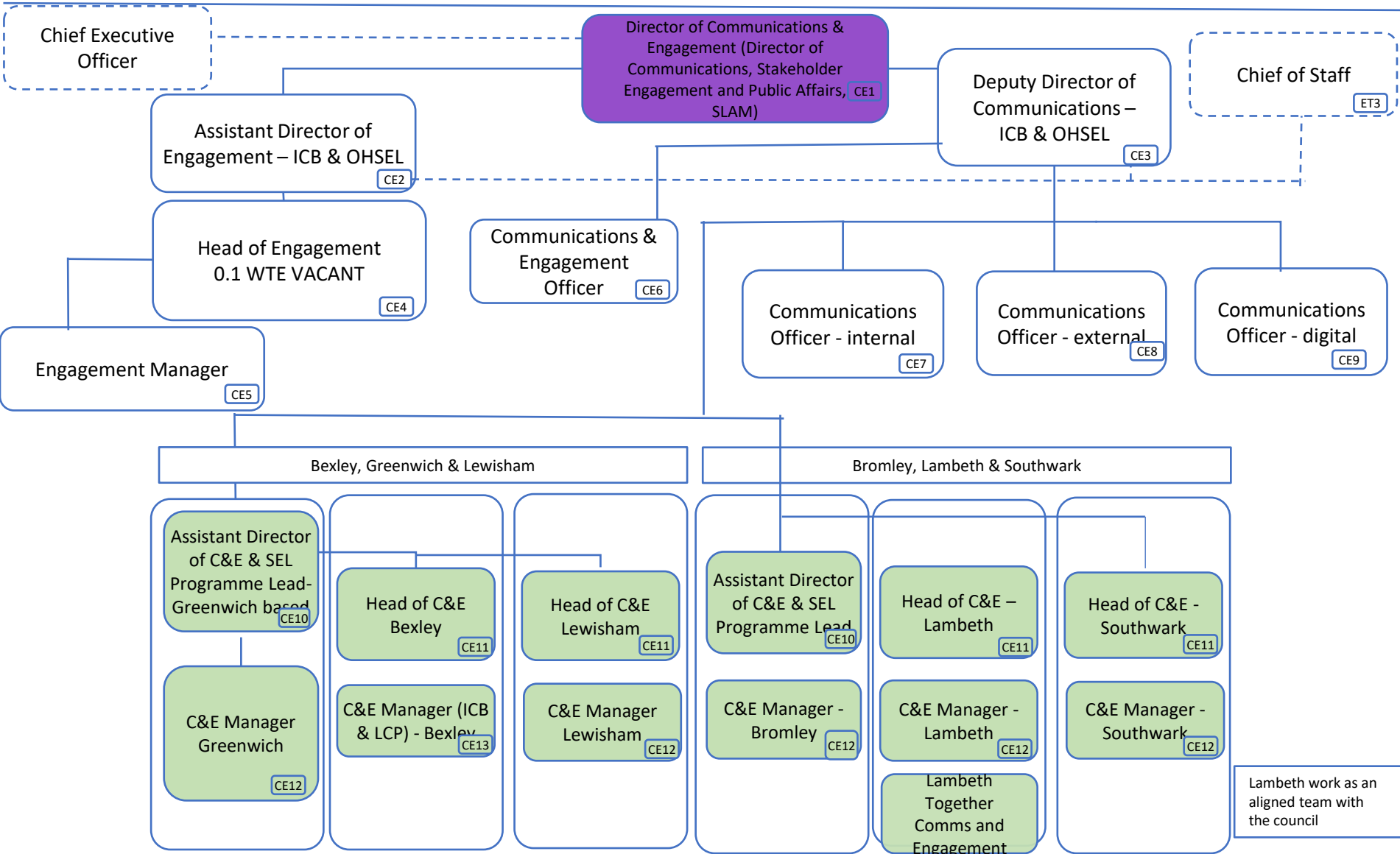








# Comms & Engagement Structure



Included in borough structure costs

