

# **NHS South East London ICB structure**

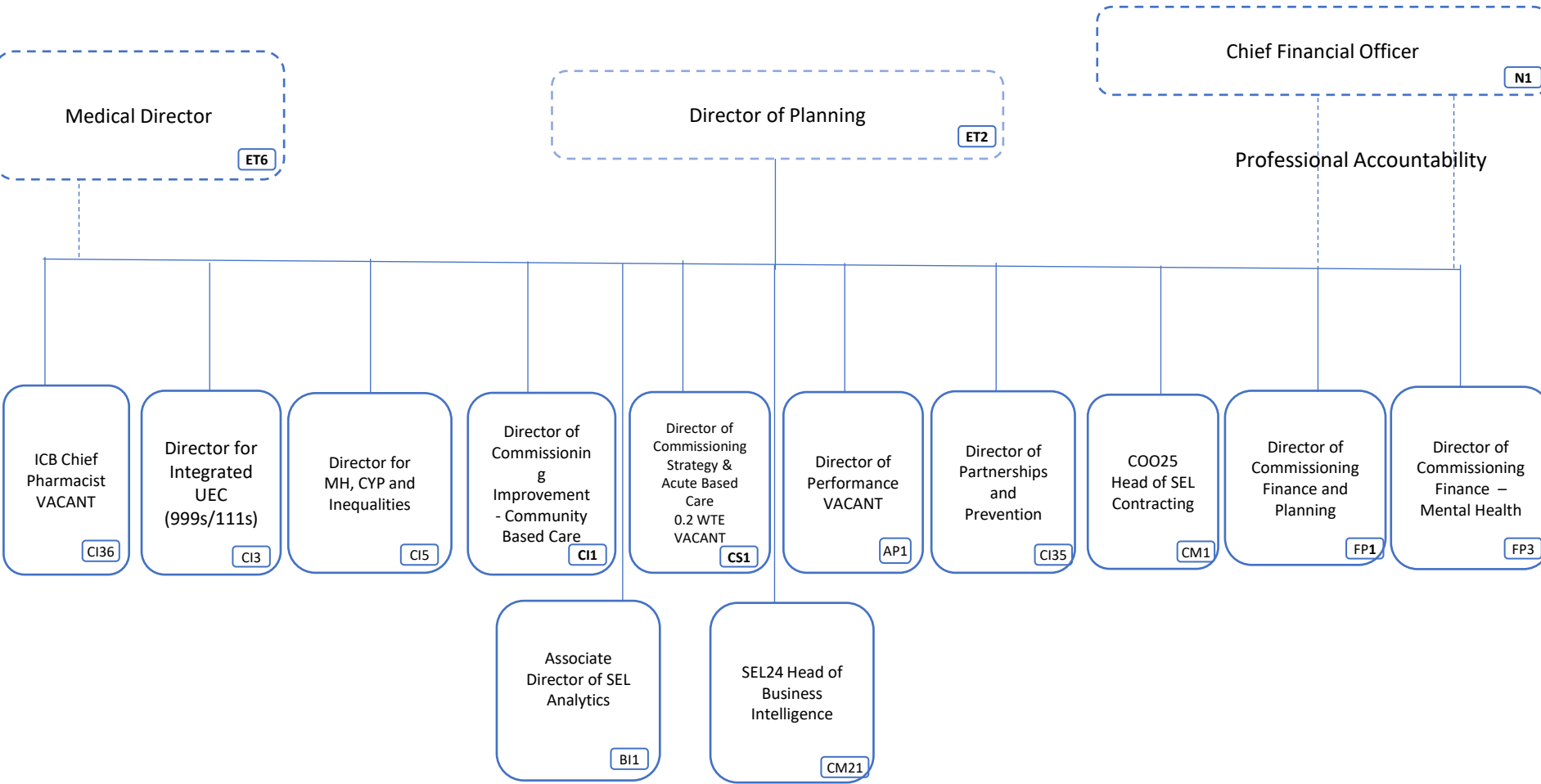
**6 January 2023**

# Planning Team Structure

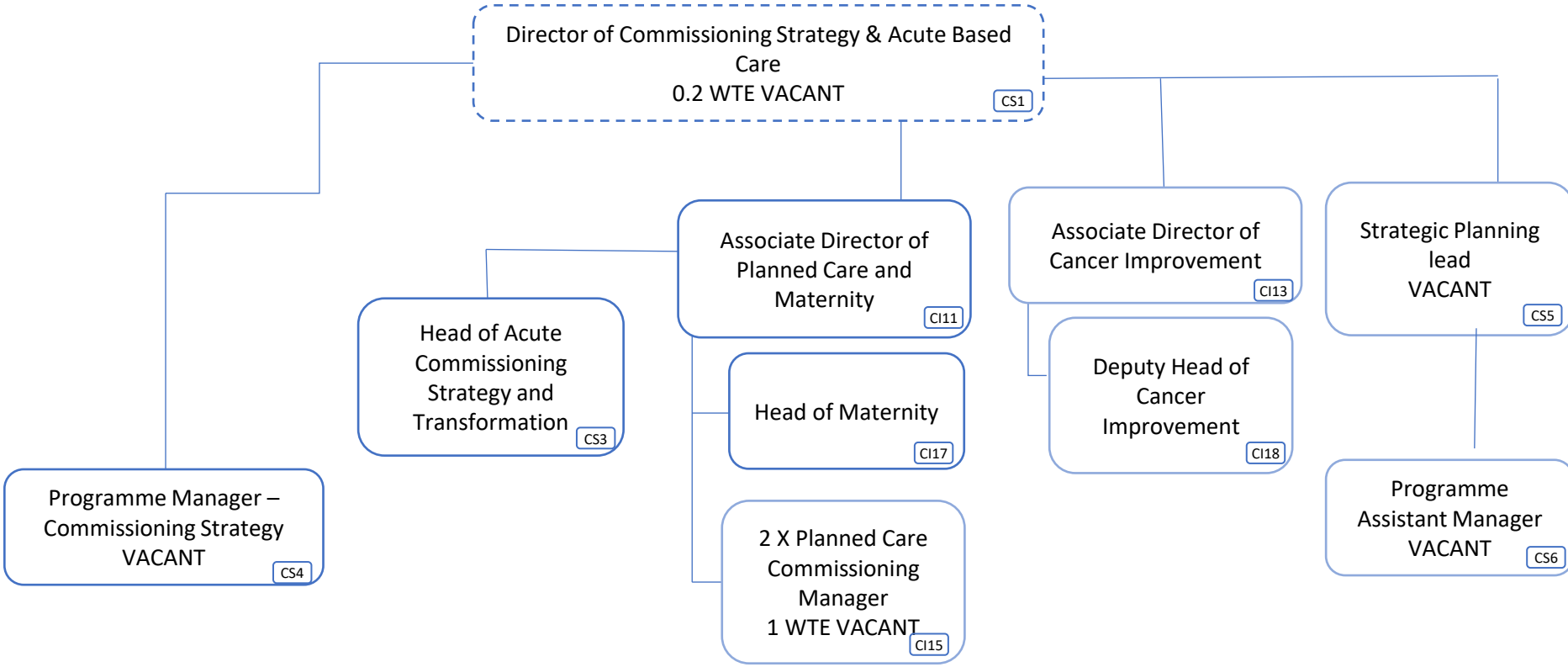
<b>Planning &amp; Commissioning team total cost</b>	<b>£7,834,628</b>
<b>Planning &amp; Commissioning team total cost excl vacancies</b>	<b>£6,279,641</b>

<b>Band</b>	<b>WTE</b>	<b>Headcount</b>
VSM	2.0	1.0
9	8.0	7.0
8D	16.63	18.0
8C	12.0	8.0
8B	21.0	15.0
8A	16.0	16.0
7	18.0	13.0
6	12.0	12.0
5	3.0	3.0
4	1.36	2.0

# Director of Planning – Top Level Structure



# Commissioning Strategy Structure



# BI/ Analytics Structure

The BI / Analytics team work closely with local population health teams

Director of Planning  
ET2

SEL Performance team

Associate Director of SEL Analytics  
BI1

SEL24 Head of Business Intelligence  
CM21

Health Intelligence Manager  
BI2

Head of SEL Analytics  
BI3

Health Intelligence Manager  
BI2

SEL64 Deputy Head of Analytics  
CM22

SEL28 Senior Manager Contracting Analytics  
CM32

Senior Health Intelligence Analyst  
BI4

Senior Health Intelligence Analyst VACANT  
BI4

Senior Health Intelligence Analyst  
BI4

Senior Health Intelligence Analyst  
BI4

Senior Health Intelligence Analyst VACANT  
BI4

Senior Health Intelligence Analyst VACANT  
BI4

2 X Intelligence Analyst 0.4 WTE VACANT  
BI5

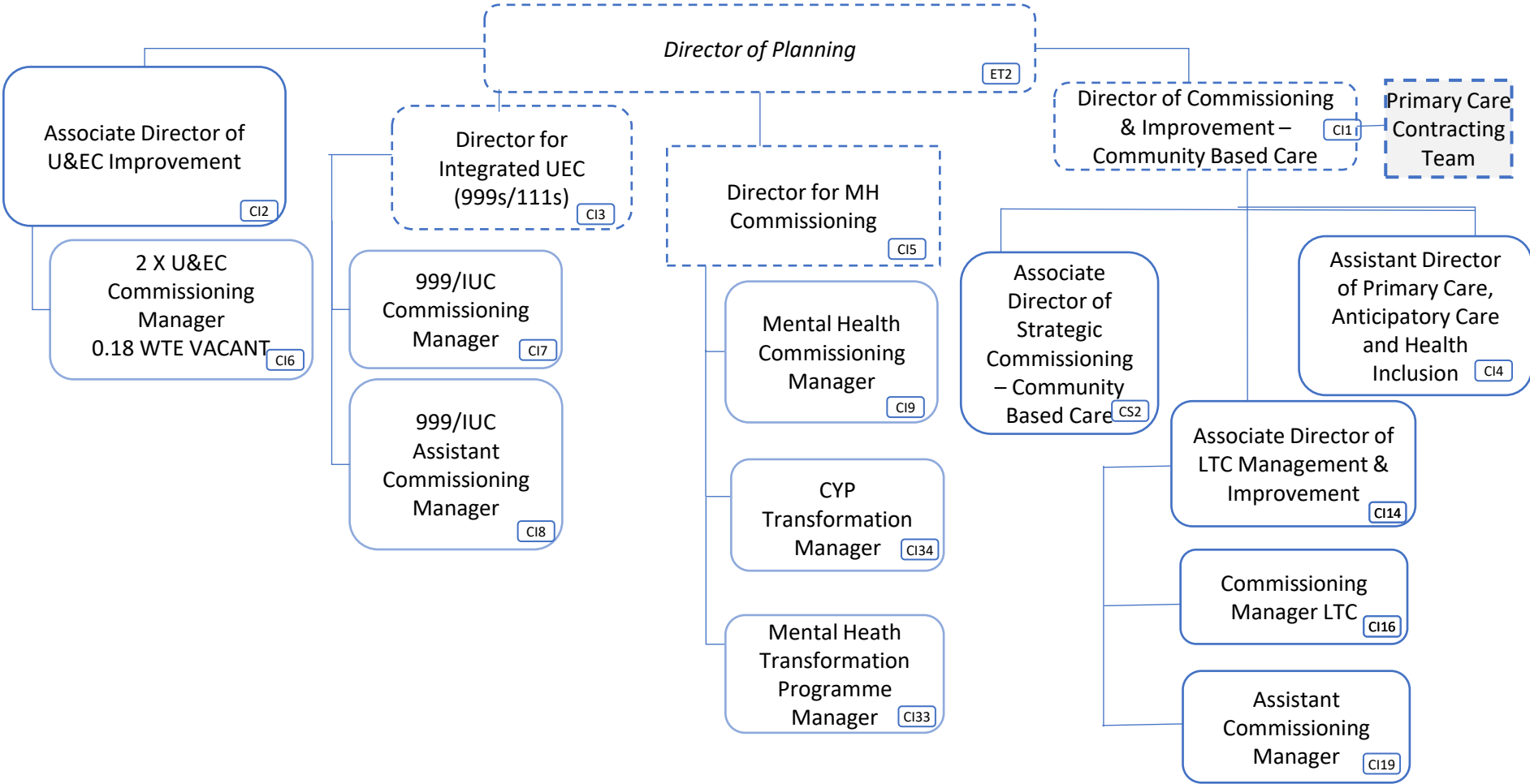
Intelligence Analyst Support Officer  
BI7

Intelligence Analyst  
BI5

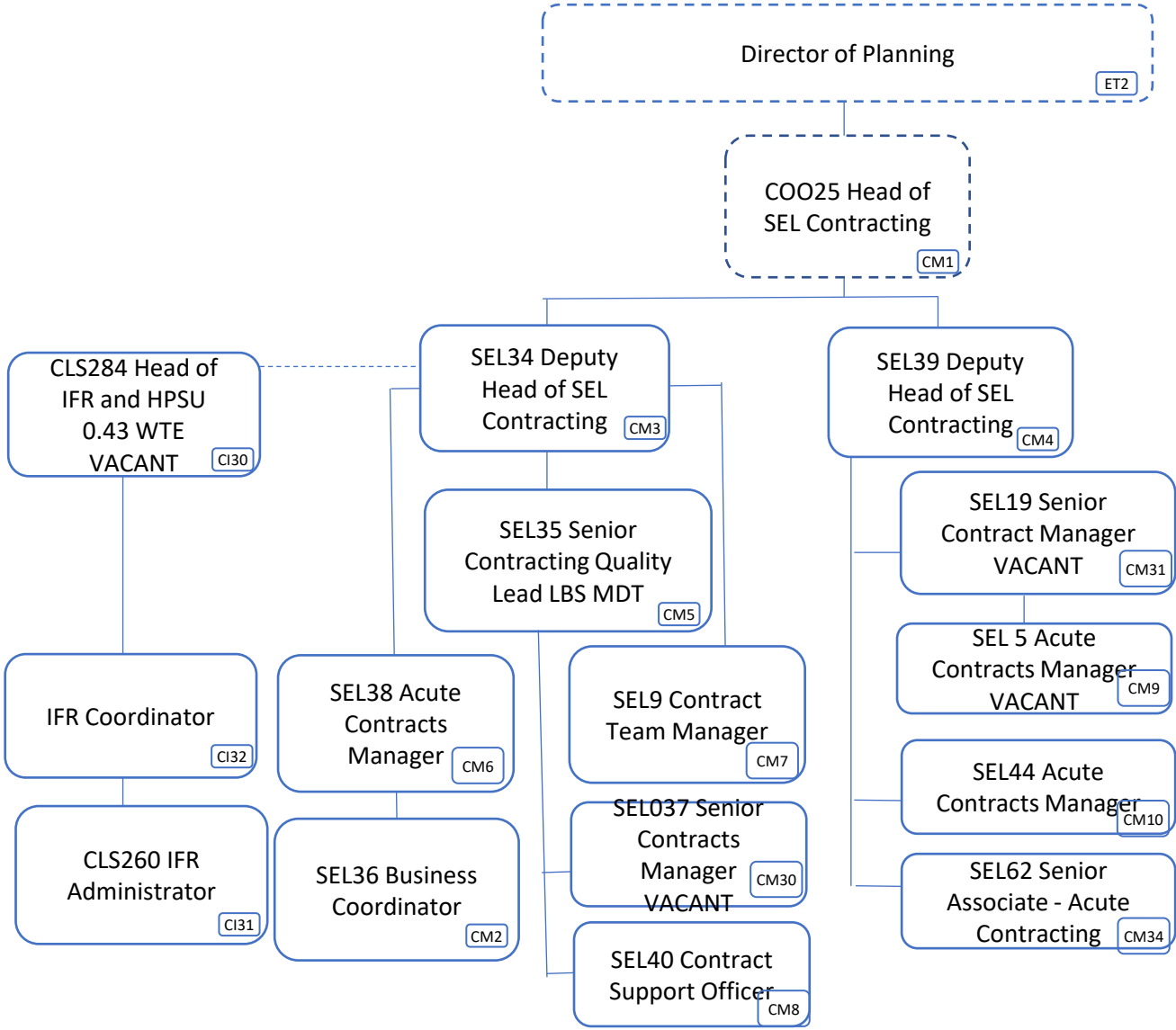
SEL25, SEL58, SEL60 3 X Contracting Analytics Specialist 1 WTE VACANT  
CM2 4-26

SEL21, SEL27 3 X Contracting Analytics Advisor 0.4 WTE VACANT  
CM27 -29

# Commissioning and Improvement Structure



*This role also works flexibly across the directorate to support delivery of agreed priorities*



# Primary Care Contracting Team

Please note that this team is fully funded by NHS England

