

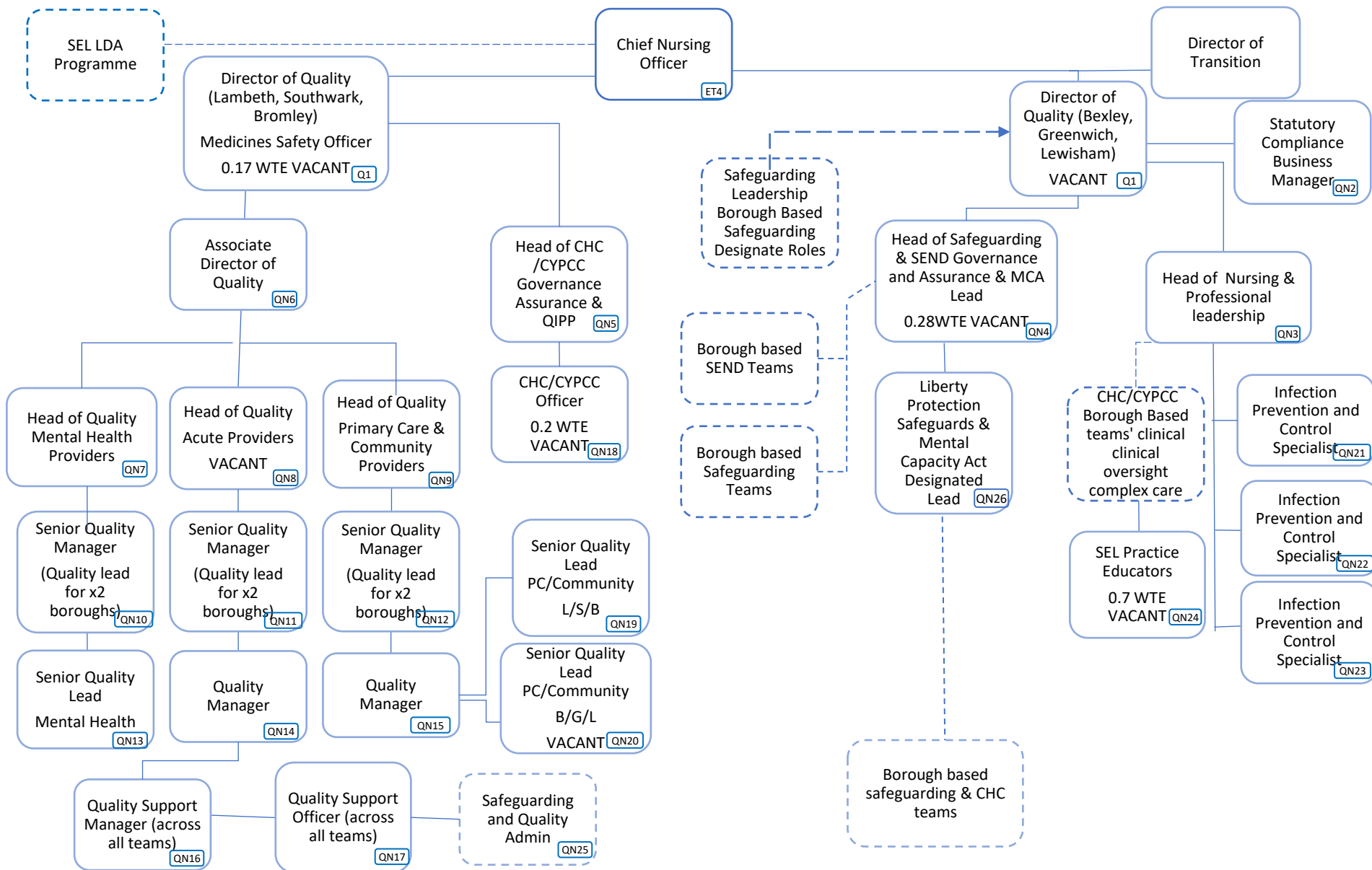
# **NHS South East London ICB structure**

**6 January 2023**

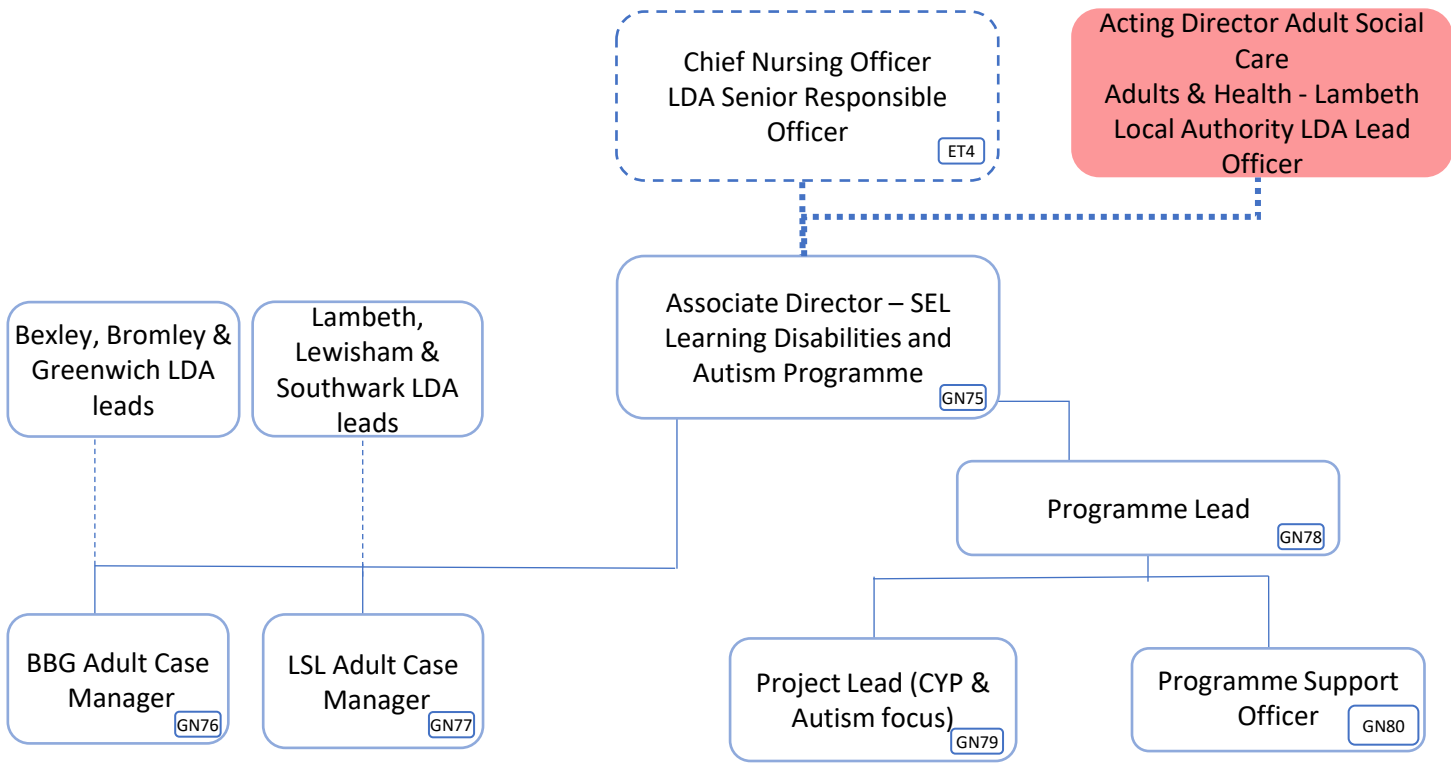
<b>Quality &amp; Nursing team total cost</b>	<b>£2,468,041</b>
<b>Quality &amp; Nursing team total cost excl vacancies</b>	<b>£1,973,135</b>

<b>Band</b>	<b>WTE</b>	<b>Headcount</b>
VSM	1.0	1.0
9	2.0	1.0
8D	3.0	3.0
8C	5.0	4.0
8B	6.0	6.0
8A	5.7	5.0
7	7.0	6.0
6	1.0	1.0
5	1.7	2.0
4	1.0	1.0

# Quality and Nursing Directorate Structure



# SEL ICS Learning Disability and Autism Programme including LeDeR & SELECT (SEL but hosted by Quality & Nursing)



 Council employee