

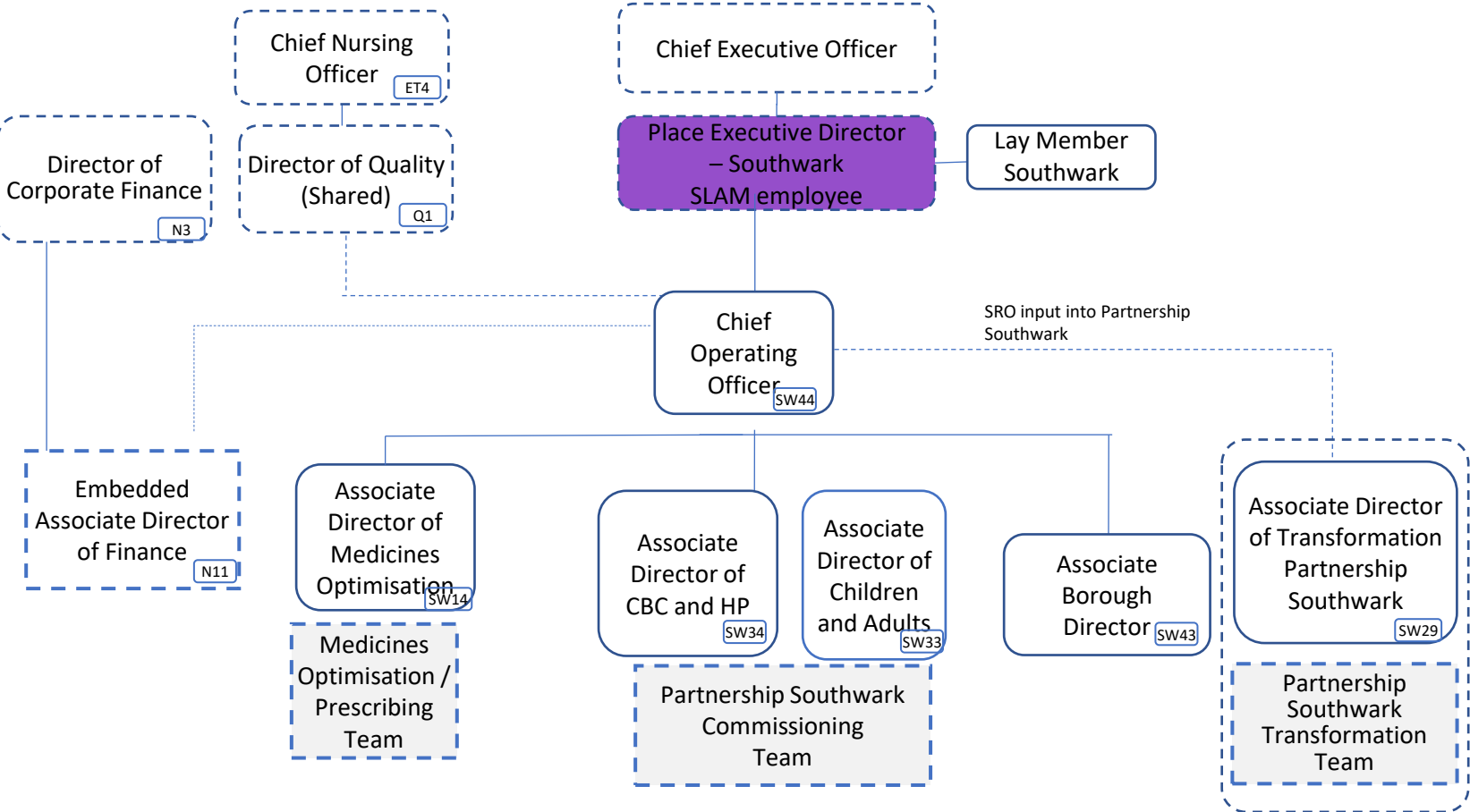
# **NHS South East London ICB structure**

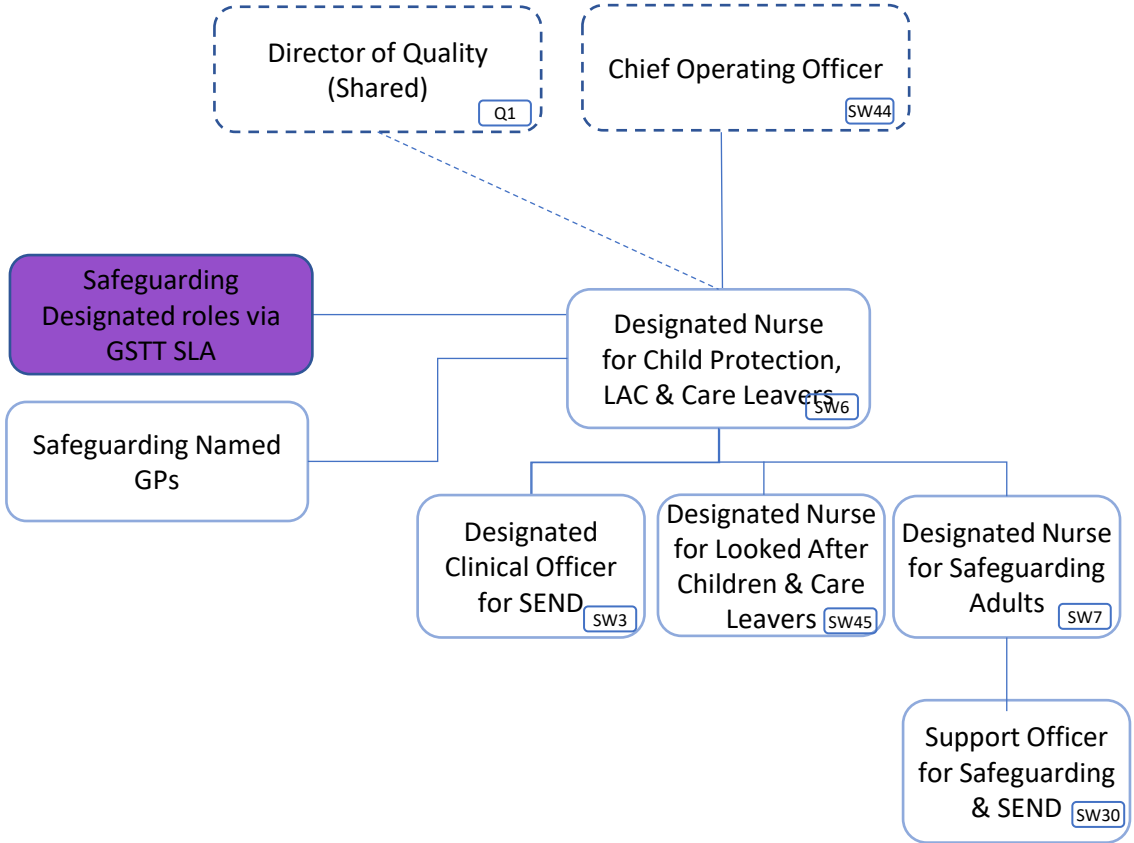
**6 January 2023**

<b>Southwark team total cost</b>	<b>£3,932,405</b>
<b>Southwark team total cost excl vacancies</b>	<b>£3,376,244</b>

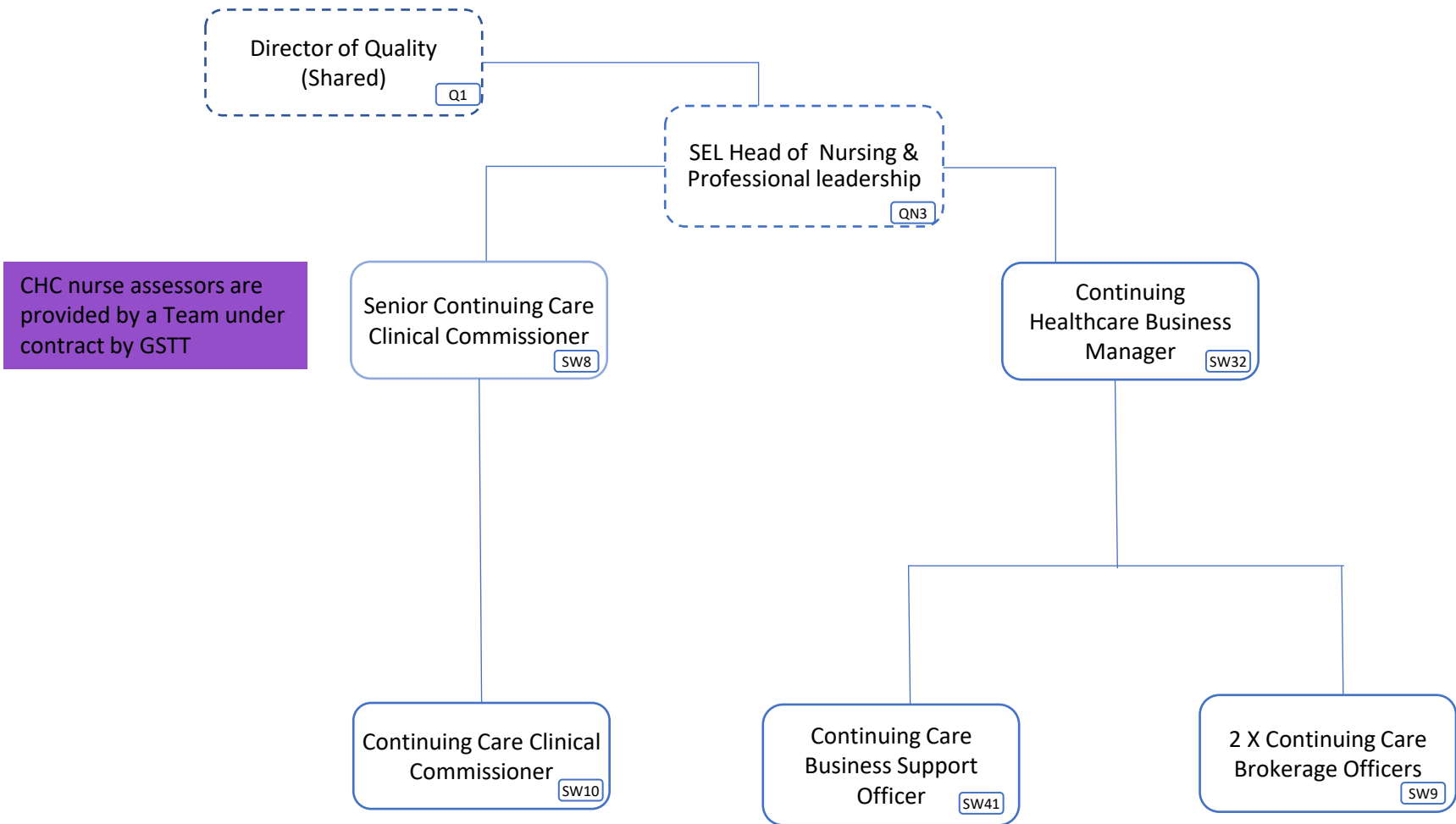
<b>Band</b>	<b>WTE</b>	<b>Headcount</b>
Adhoc	0.56	2.0
VSM	1.0	1.0
8D	6.0	6.0
8C	6.6	5.0
8B	12.14	14.0
8A	9.55	9.0
7	6.0	3.0
6	3.0	3.0
5	5.0	5.0

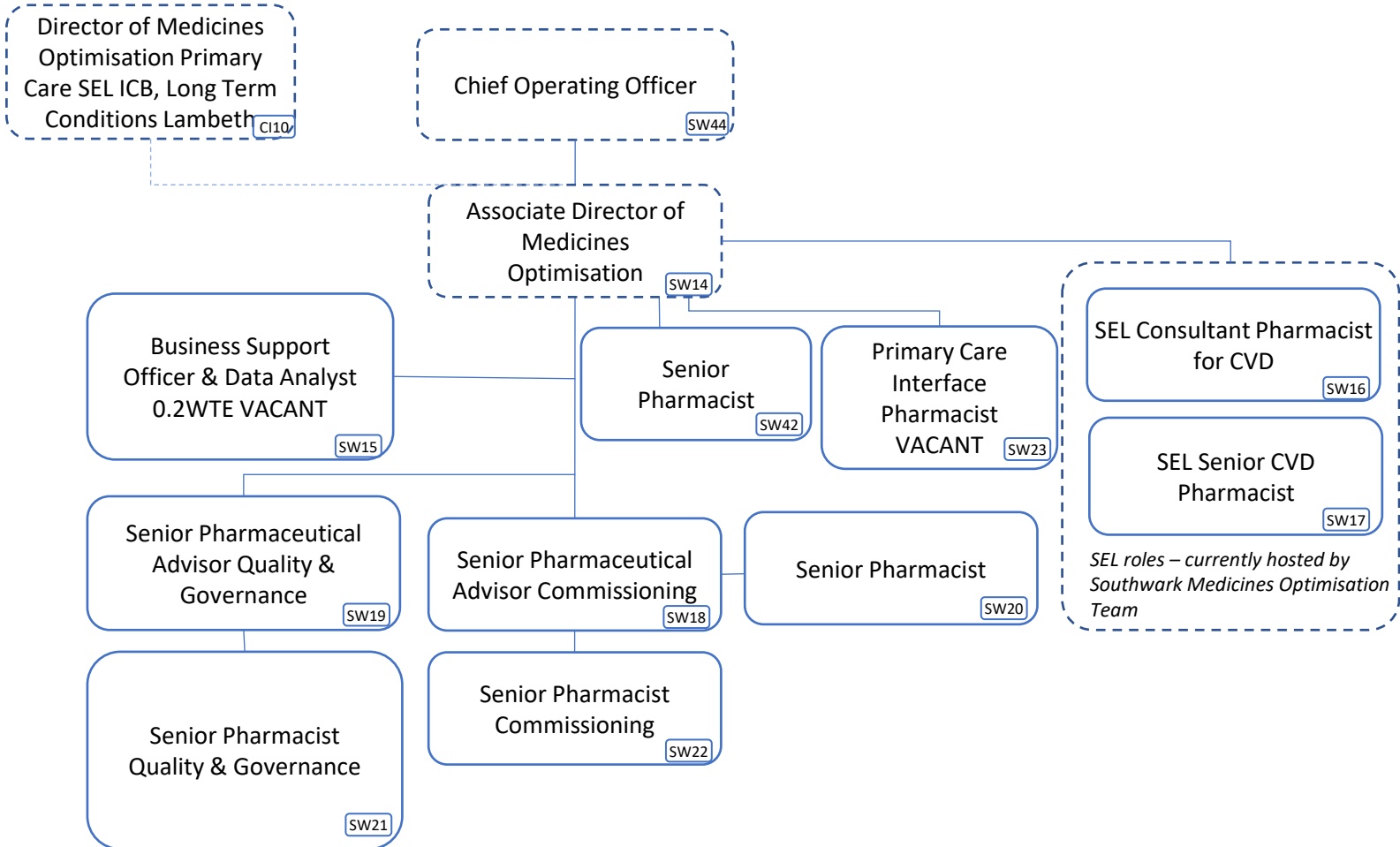
# Southwark Overall Structure



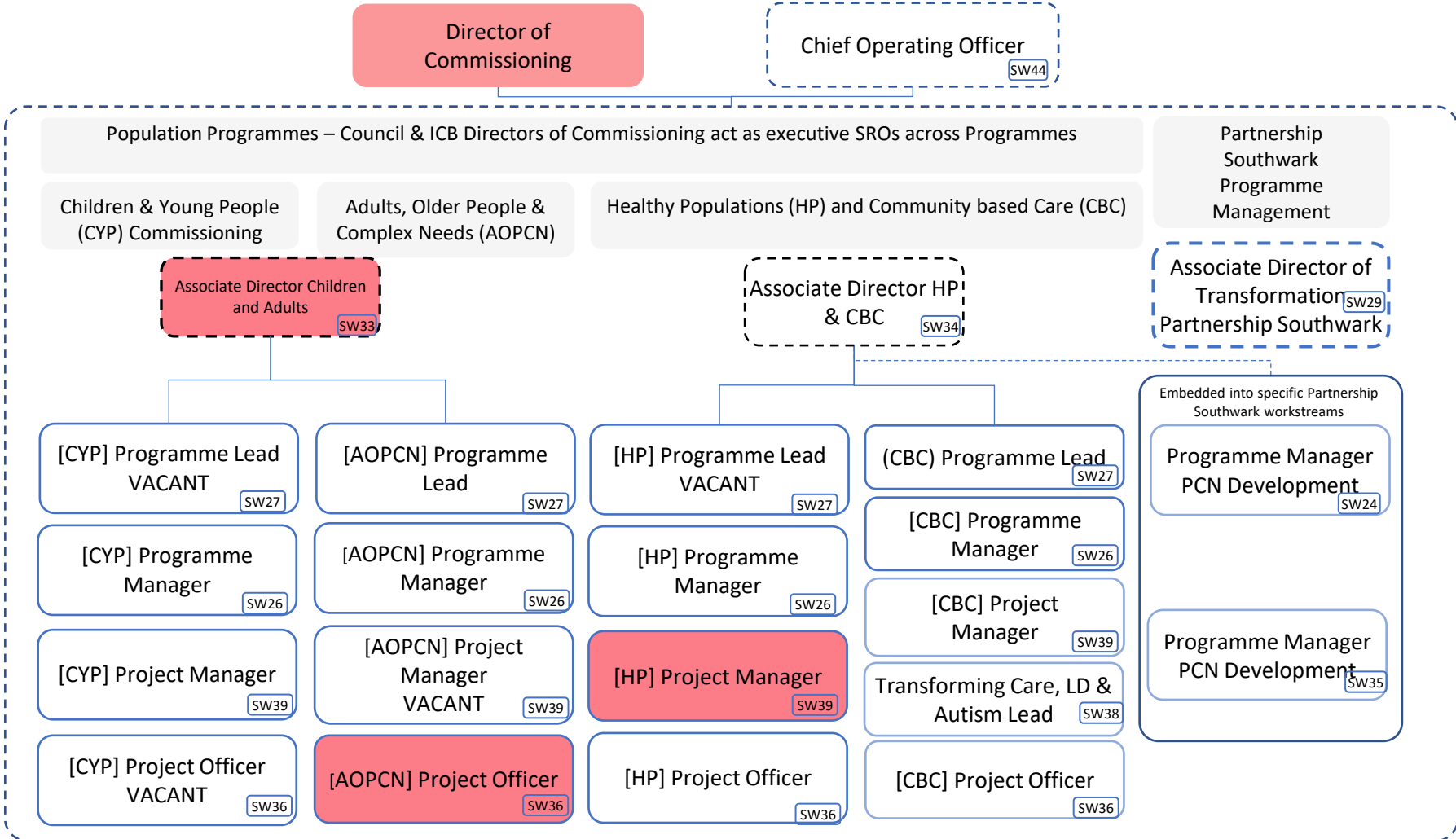


# Southwark Continuing Healthcare (CHC) Team Structure





# Partnership Southwark Commissioning Team Structure



Council employee

- Looking at further alignment between Council and NHS commissioning in:
- Adult social care
  - Children's social care
  - Housing
  - Education
  - Public Health and Wellbeing
  - Other functions, TBC

