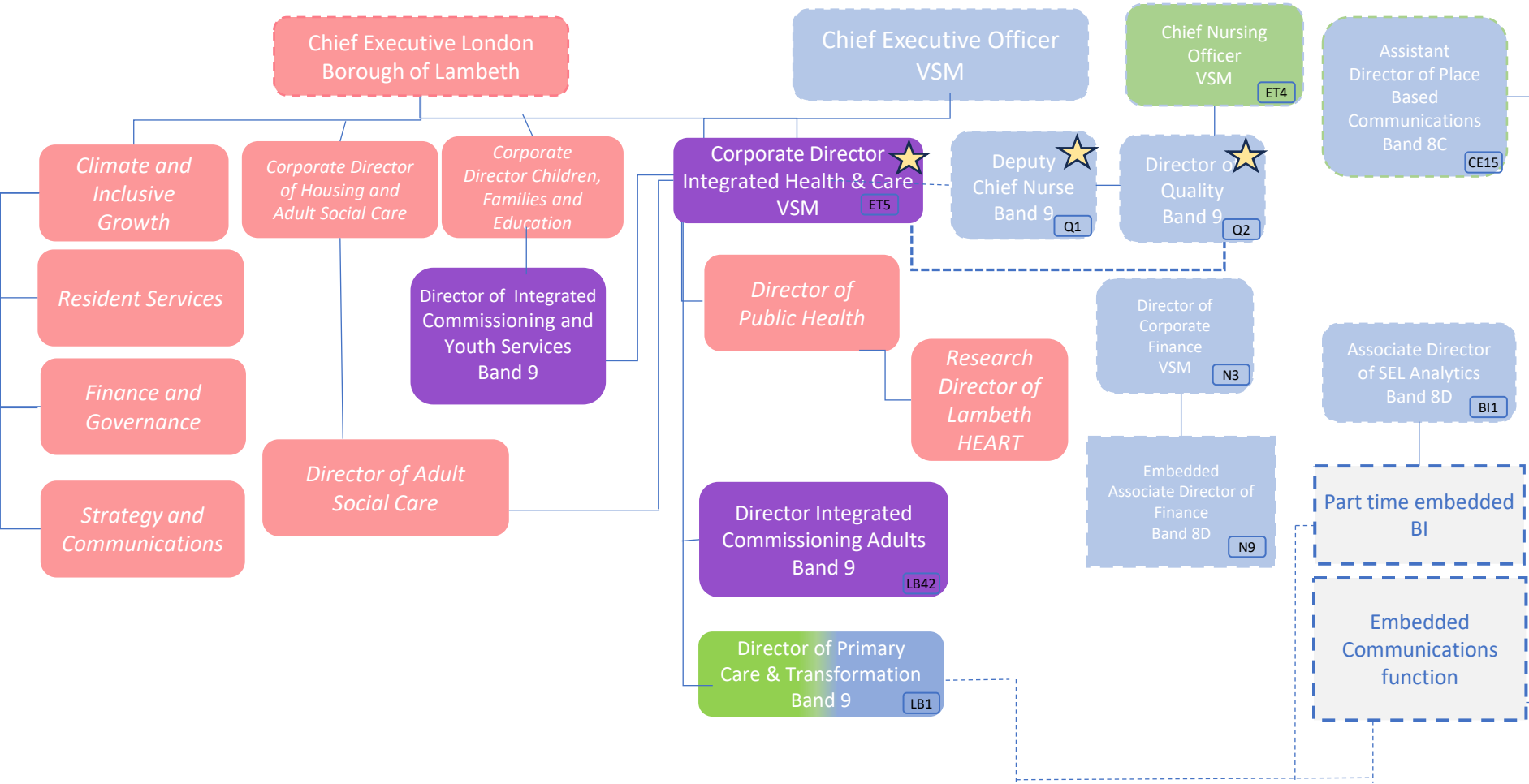


## Lambeth Structure

---

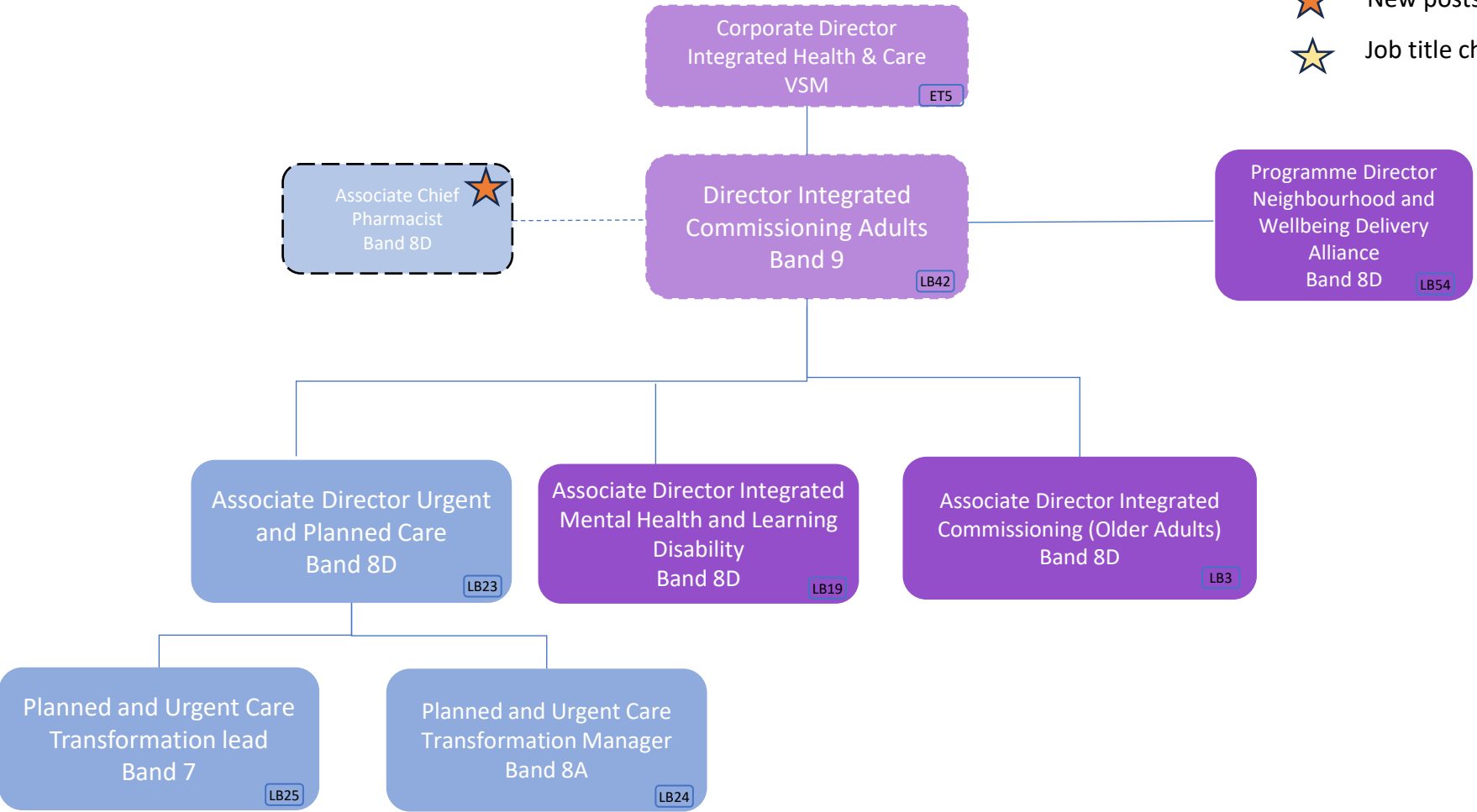


- Posts deleted
- Job title change

Key

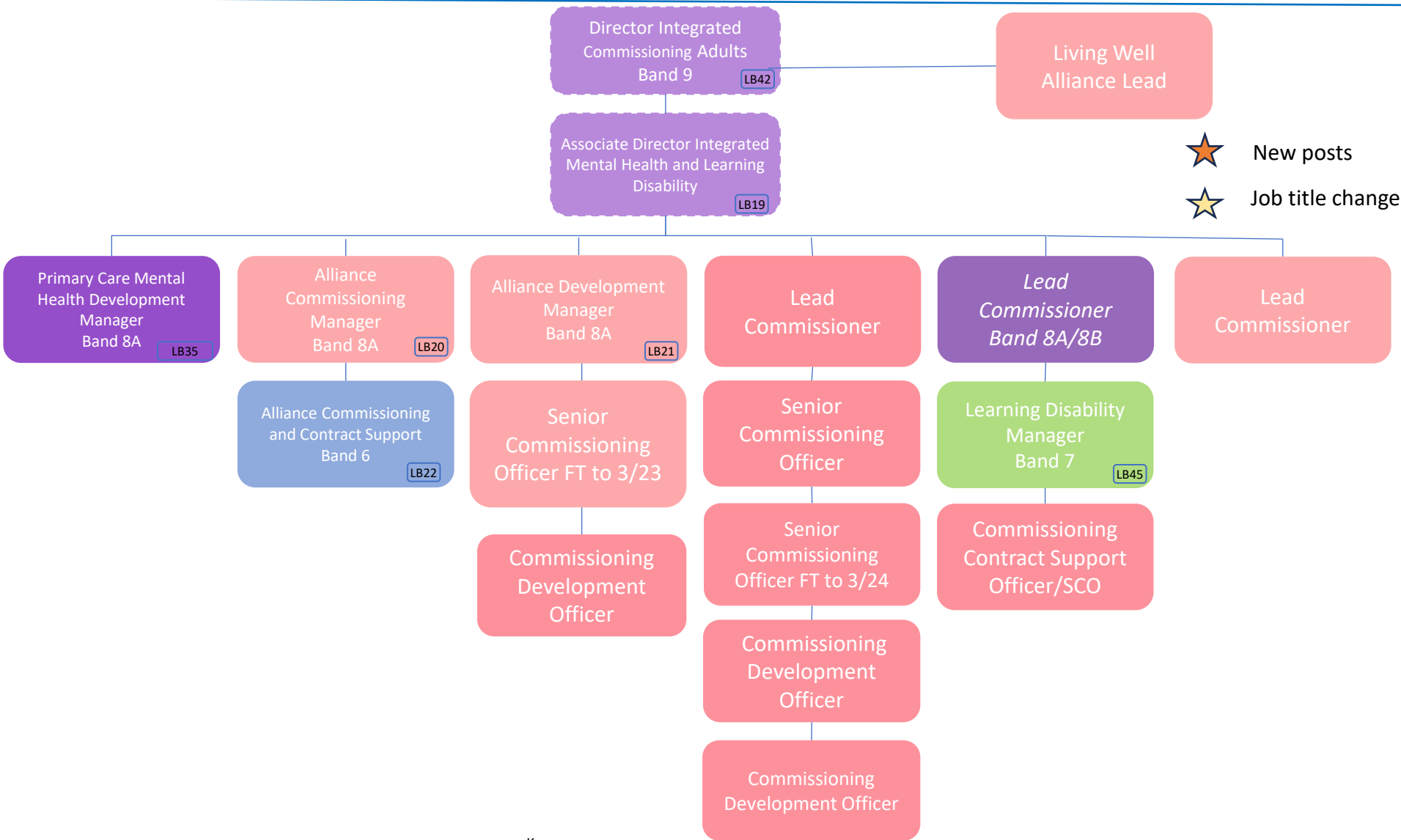
|              |  |   |                          |                             |
|--------------|--|---|--------------------------|-----------------------------|
| FTC          | ICB funded roles   | Role shown on other structure for reference | Part substantive vacancy | Line Management             |
| VACANT roles | Indicative joint roles subject to funding, and employment considerations | Partner roles                               | Joint role Vacancy       | Dotted line management      |
|              |  |   | FTC Vacancy              | Clinical safeguarding roles |

★ New posts  
 ★ Job title change



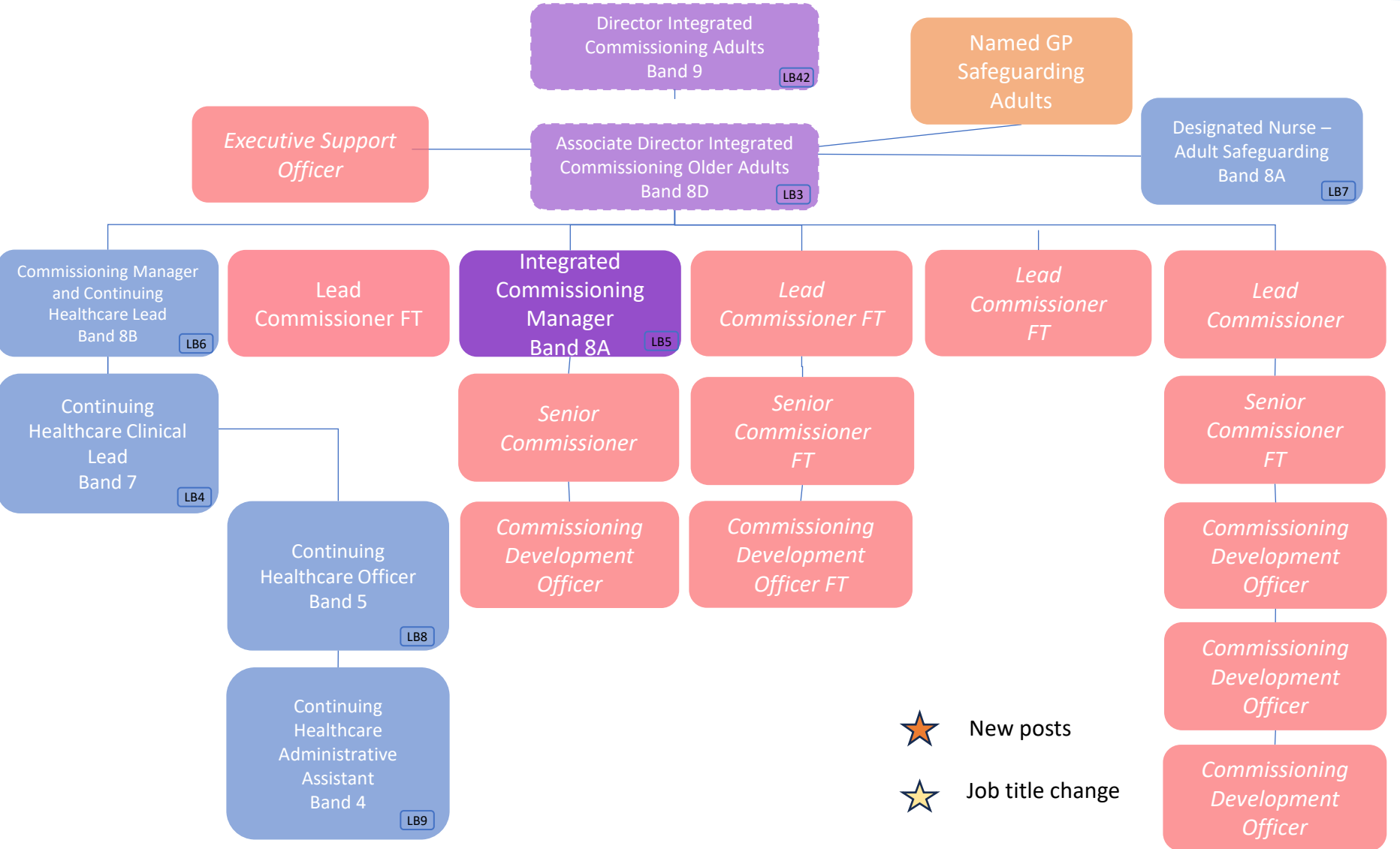
Roles LB23, LB24 & LB25 are joint with Southwark

| Key          |  |   |                          |                             |
|--------------|--|---|--------------------------|-----------------------------|
| FTC          | ICB funded roles   | Role shown on other structure for reference | Part substantive vacancy | Line Management             |
| VACANT roles | Indicative joint roles subject to funding, and employment considerations | Partner roles                               | Joint role Vacancy       | Dotted line management      |
|              |  |   | FTC Vacancy              | Clinical safeguarding roles |



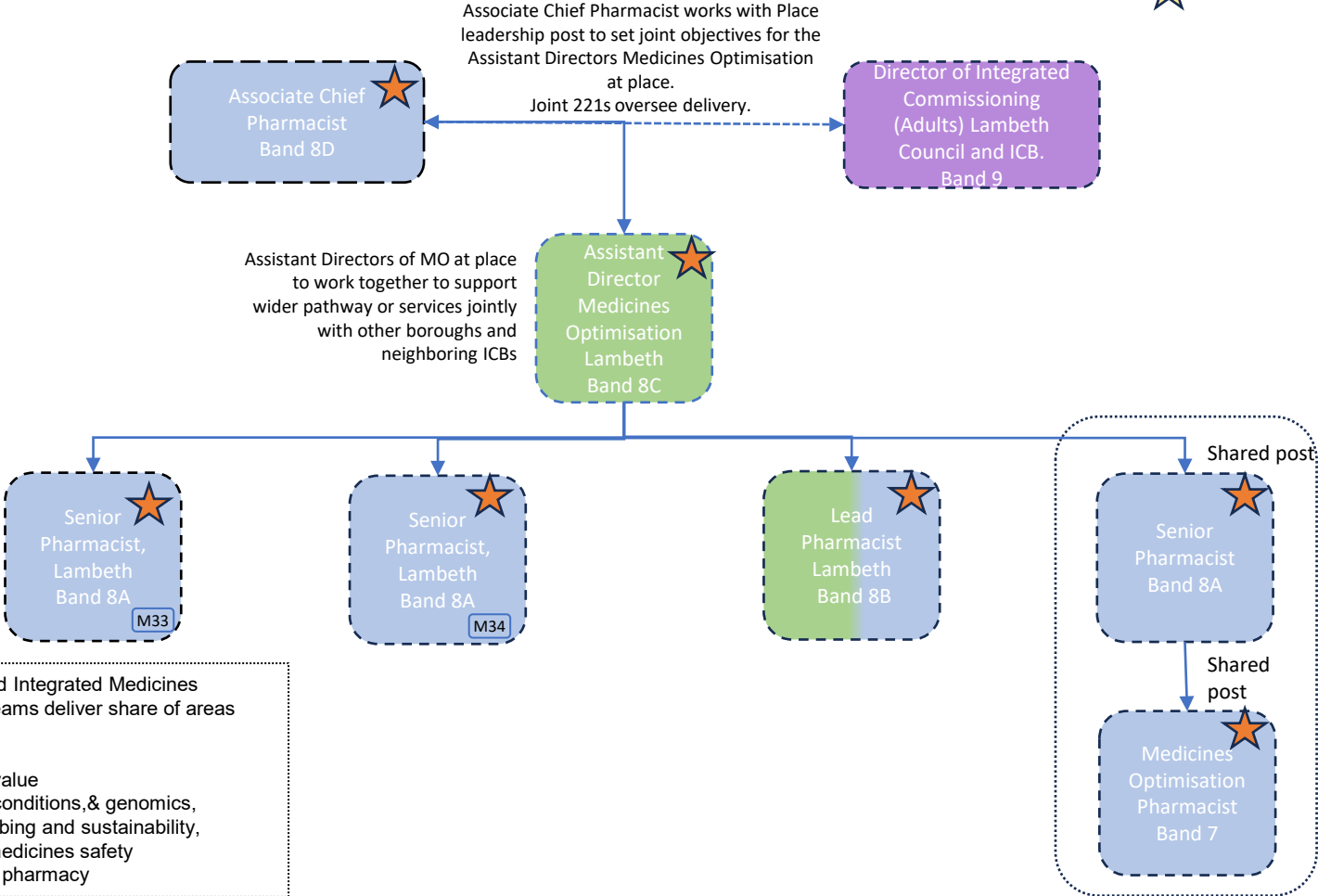
New posts  
 Job title change

|              |  |   |                          |                        |
|--------------|--|---|--------------------------|------------------------|
| FTC          | ICB funded roles   | Role shown on other structure for reference | Part substantive vacancy | Line Management        |
| VACANT roles | Indicative joint roles subject to funding, and employment considerations | Partner roles                               | Joint role Vacancy       | Dotted line management |
|              |  |   | FTC Vacancy              |                        |



|              |  |   |                          |                             |
|--------------|--|---|--------------------------|-----------------------------|
| FTC          | ICB funded roles   | Role shown on other structure for reference | Part substantive vacancy | Line Management             |
| VACANT roles | Indicative joint roles subject to funding, and employment considerations | Partner roles                               | Joint role Vacancy       | Dotted line management      |
|              |  |   | FTC Vacancy              | Clinical safeguarding roles |

★ New posts  
★ Amended posts

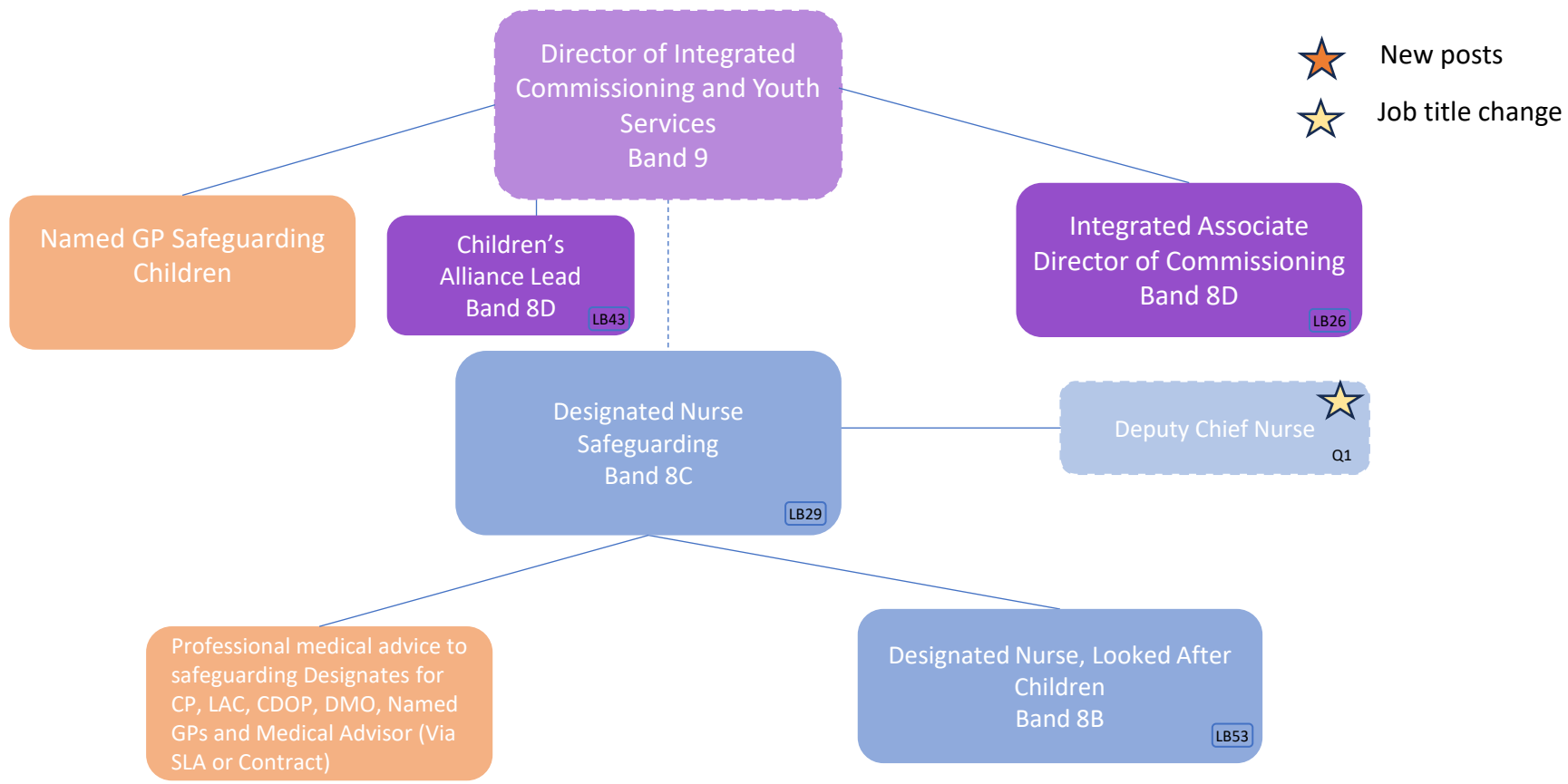


- Transforming and Integrated Medicines Optimisation – teams deliver share of areas from :
1. Workforce
  2. Medicines value
  3. Long term conditions, & genomics,
  4. Overprescribing and sustainability,
  5. AMR and medicines safety
  6. Community pharmacy

Develop integrated pharmacy roles with PCNs and providers.

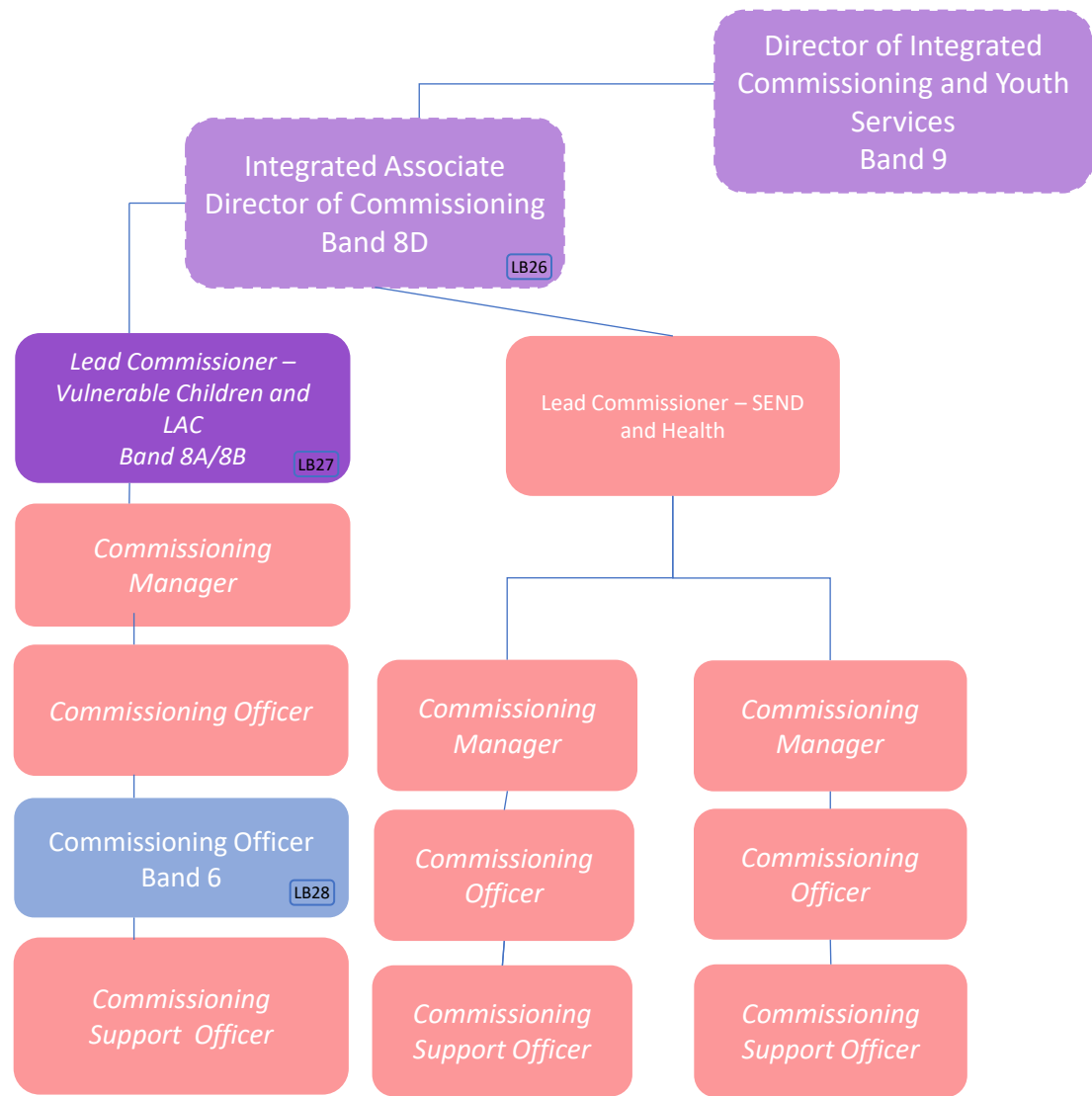
Key

|              |  |   |                          |                             |
|--------------|--|---|--------------------------|-----------------------------|
| FTC          | ICB funded roles   | Role shown on other structure for reference | Part substantive vacancy | Line Management             |
| VACANT roles | Indicative joint roles subject to funding, and employment considerations | Partner roles                               | Joint role Vacancy       | Dotted line management      |
|              |  |   | FTC Vacancy              | Clinical safeguarding roles |



★ New posts  
★ Job title change

|              |  |   |                          |                             |
|--------------|--|---|--------------------------|-----------------------------|
| FTC          | ICB funded roles   | Role shown on other structure for reference | Part substantive vacancy | Line Management             |
| VACANT roles | Indicative joint roles subject to funding, and employment considerations | Partner roles                               | Joint role Vacancy       | Dotted line management      |
|              |  |   | FTC Vacancy              | Clinical safeguarding roles |



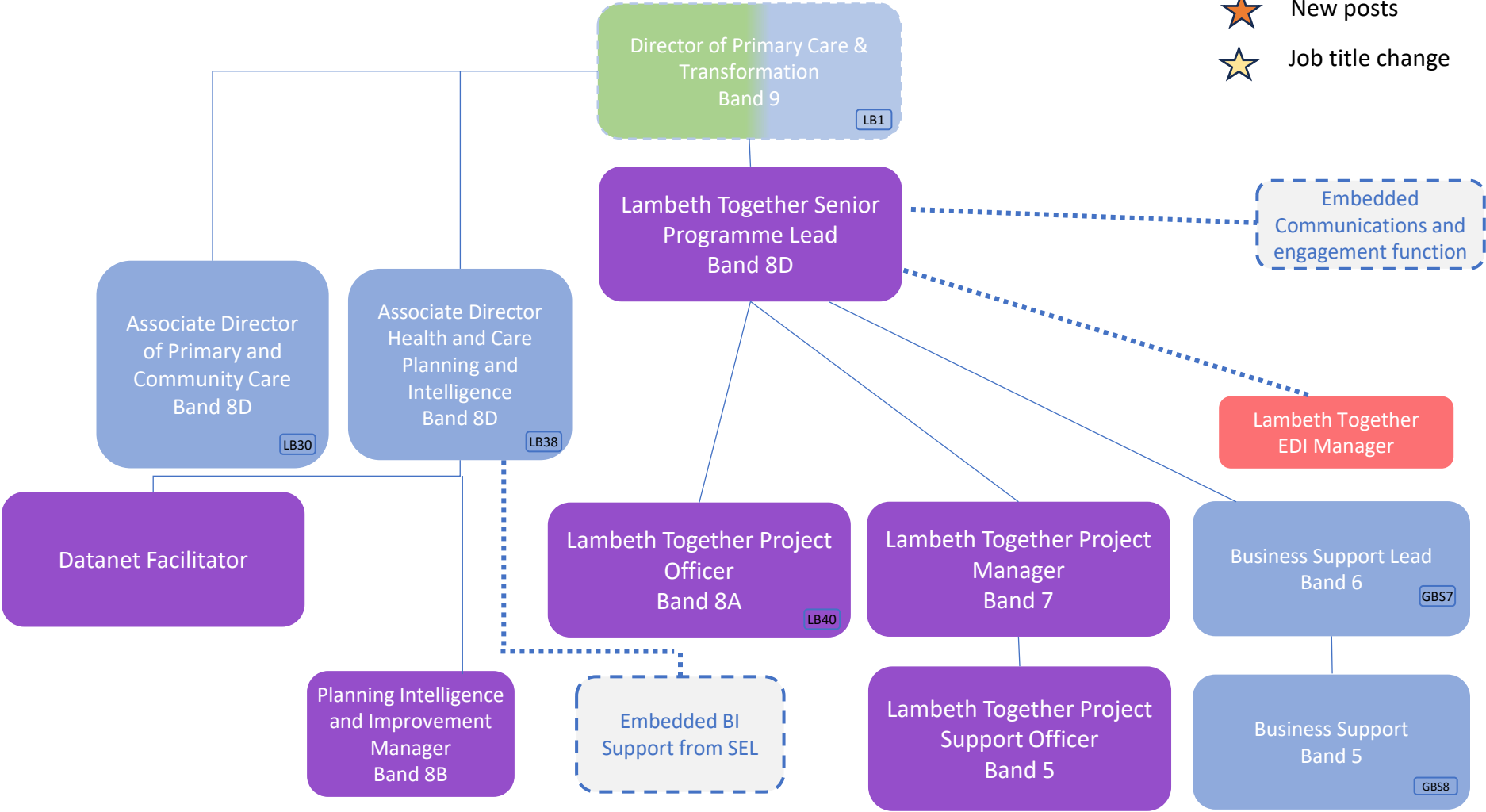
- New posts
- Job title change

**Key**

|              |  |   |                          |                             |
|--------------|--|---|--------------------------|-----------------------------|
| FTC          | ICB funded roles   | Role shown on other structure for reference | Part substantive vacancy | Line Management             |
| VACANT roles | Indicative joint roles subject to funding, and employment considerations | Partner roles                               | Joint role Vacancy       | Dotted line management      |
|              |  |   | FTC Vacancy              | Clinical safeguarding roles |





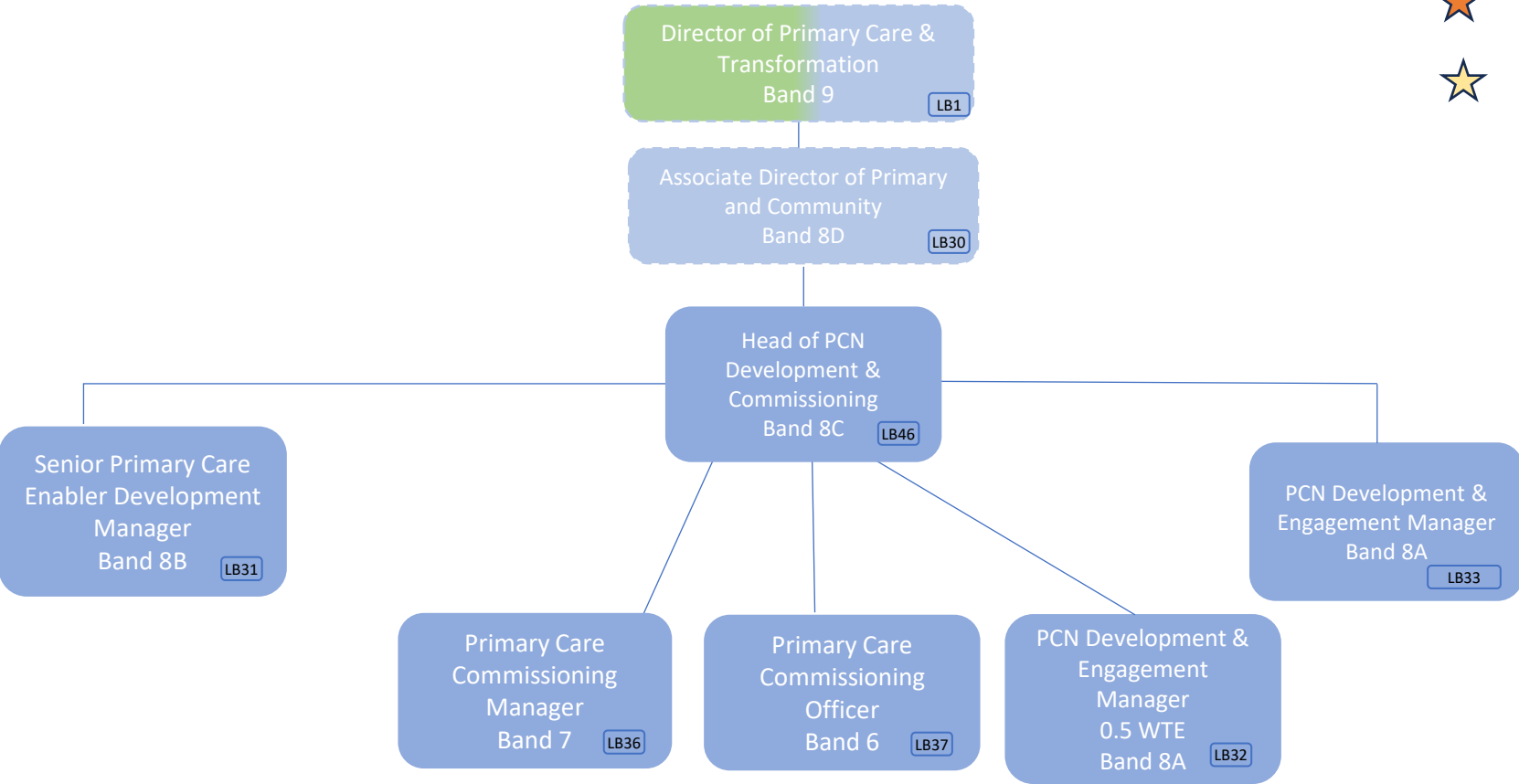
- New posts
- Job title change















**Key**

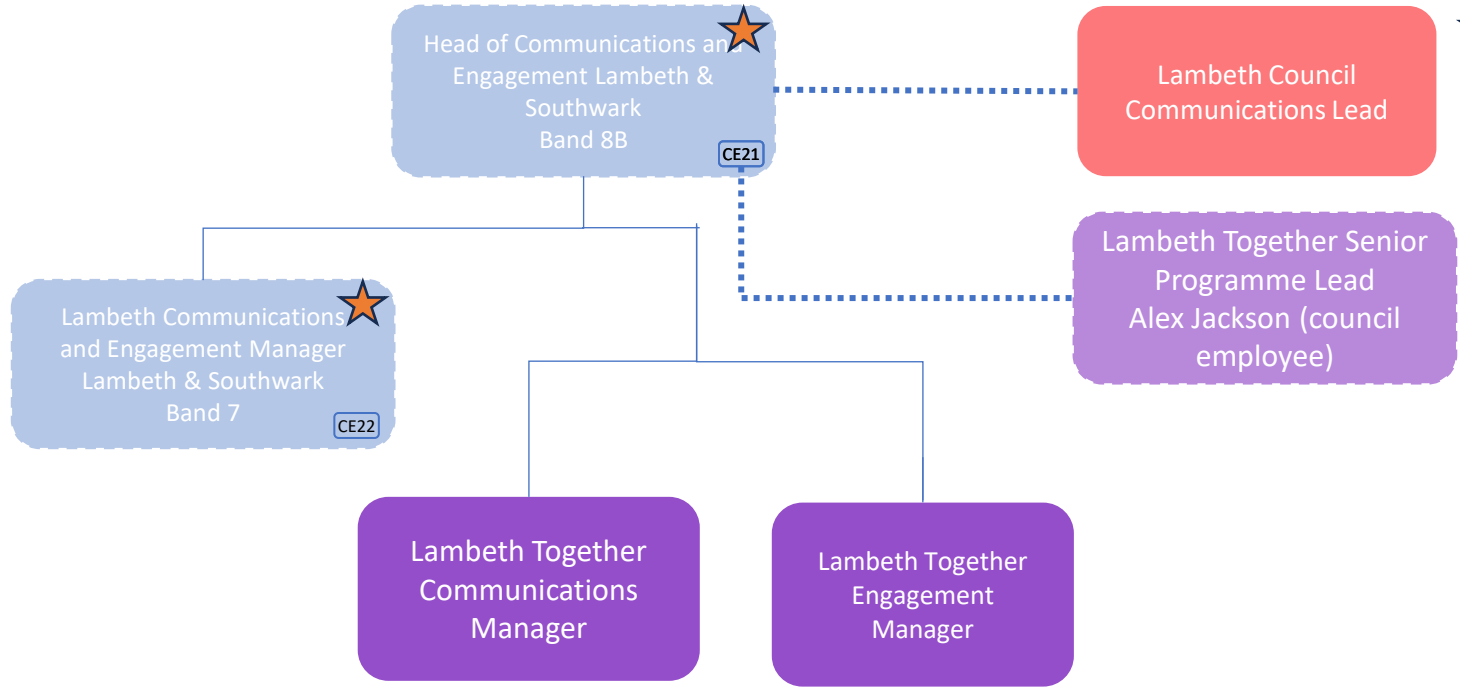
|              |  |   |                          |                             |
|--------------|--|---|--------------------------|-----------------------------|
| FTC          | ICB funded roles   | Role shown on other structure for reference | Part substantive vacancy | Line Management             |
| VACANT roles | Indicative joint roles subject to funding, and employment considerations | Partner roles                               | Joint role Vacancy       | Dotted line management      |
|              |  |   | FTC Vacancy              | Clinical safeguarding roles |

-  New posts
-  Job title change



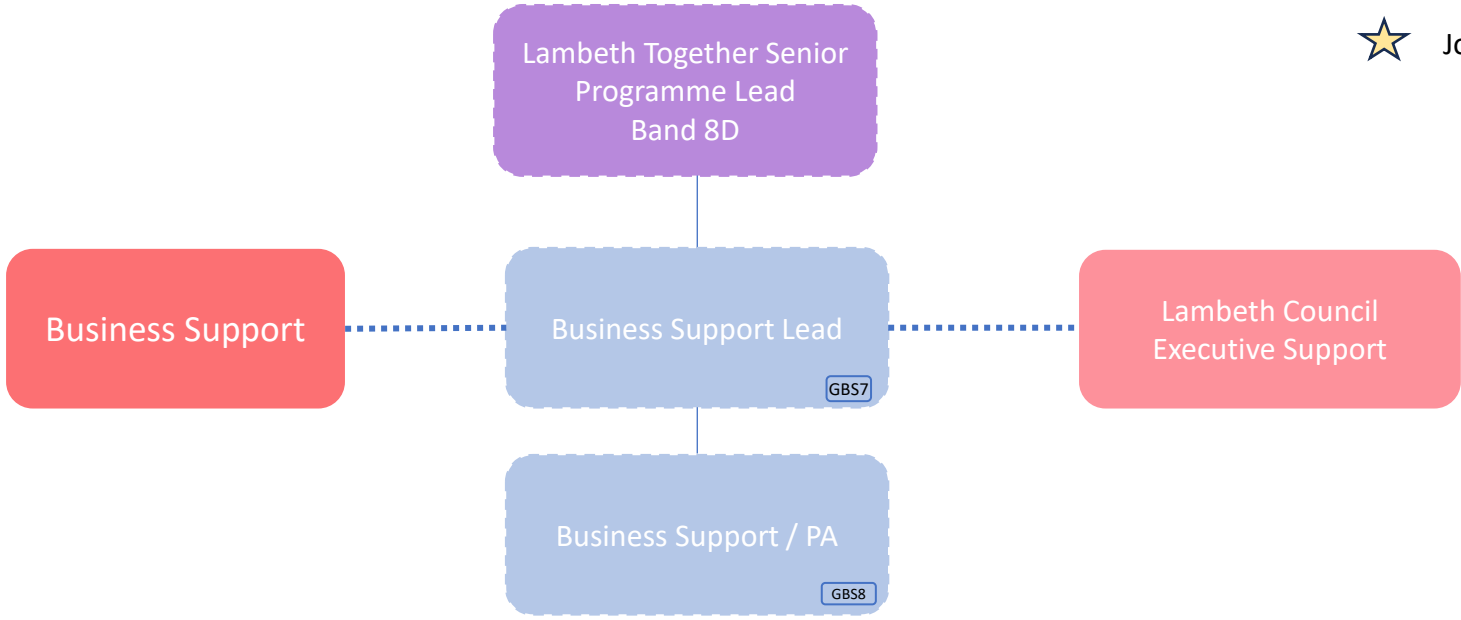
| Key  |                          |   |  |   |   |
|--|--------------------------|---|--|---|---|
|   | FTC                      |    | ICB funded roles   |    | Role shown on other structure for reference |
|   | VACANT roles             |    | Indicative joint roles subject to funding, and employment considerations |    | Partner roles                               |
|  | Part substantive vacancy |   | Joint role Vacancy   |  | Line Management                             |
|  | FTC Vacancy              |  |  |  | Clinical safeguarding roles                 |

★ New posts  
★ Job title change



| Key          |  |   |                          |                             |
|--------------|--|---|--------------------------|-----------------------------|
| FTC          | ICB funded roles   | Role shown on other structure for reference | Part substantive vacancy | Line Management             |
| VACANT roles | Indicative joint roles subject to funding, and employment considerations | Partner roles                               | Joint role Vacancy       | Dotted line management      |
|              |  |   | FTC Vacancy              | Clinical safeguarding roles |

- New posts
- Job title change



**Key**

|              |  |   |                          |                             |
|--------------|--|---|--------------------------|-----------------------------|
| FTC          | ICB funded roles   | Role shown on other structure for reference | Part substantive vacancy | Line Management             |
| VACANT roles | Indicative joint roles subject to funding, and employment considerations | Partner roles                               | Joint role Vacancy       | Dotted line management      |
|              |  |   | FTC Vacancy              | Clinical safeguarding roles |